



M.E.P.

Marine Engineering Pipeworks

**90/10 Copper Nickel
Marine Products And
Services Guide**



Introduction

Established in 1973, Marine Engineering Pipeworks Limited hold an extensive range of copper alloys for use in the Marine and Offshore Industries.

This brochure is primarily for 90/10 Copper Nickel tube, fittings and flanges to Marine standards as well as associated items used in conjunction with this publication.

This family run company is located in Sunderland in the North East of England and our experienced and knowledgeable staff work hard to ensure we meet both your urgent and long term requirements, providing a service Nationally and Worldwide.

We hope this brochure proves useful and suggest you also check out our other "Products and Services" on pages 58 and 59, as well as our EEMUA brochure for heavier wall Offshore standards.

“Time and tide...

...wait for no man ,”



Marine Engineering Pipeworks Ltd.

Leechmere Industrial Estate, Grangetown, Sunderland, SR2 9TE, United Kingdom
Tel: +44 191 521 1941 - Fax: +44 191 523 6954 - E-mail: Info@Mepsun.com - Web: www.Mepsun.com

Contents

Pipe

Page 4

DIN 86019 (Seamless), DIN 86018 (Seam Welded)
ASTM / EN Specifications also stocked

Flanges

Pages 6 - 16

PN10, PN16
Weld Neck, Slip On, Composite, Blind

Butt Weld Fittings

Pages 17 - 34

Elbow, Tee, Reducer, End Cap, Saddle

Machined Fittings

Pages 35 - 57

Socket Weld, Threaded
Elbow, Tee, Coupling, Union, End Cap, Adaptor

Products And Services

Pages 58 - 59

Contact Details

Page 60



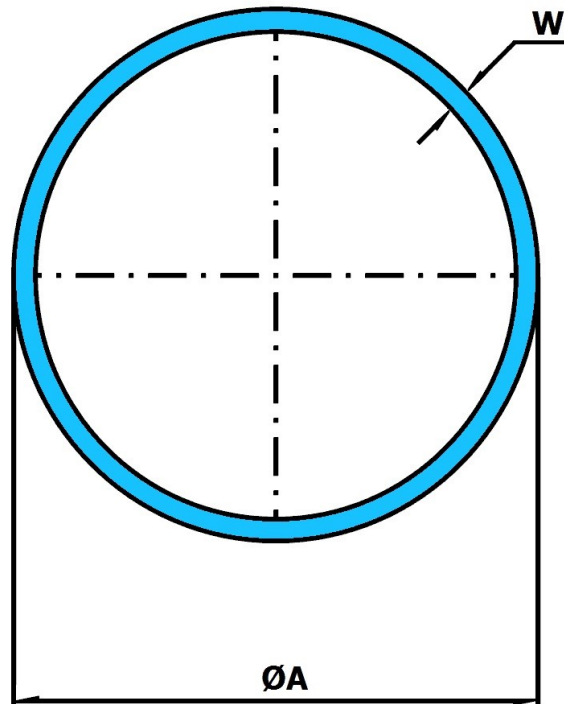
Marine Engineering Pipeworks Ltd.

Leechmere Industrial Estate, Grangetown, Sunderland, SR2 9TE, United Kingdom
Tel: +44 191 521 1941 - Fax: +44 191 523 6954 - E-mail: Info@Mepsun.com - Web: www.Mepsun.com

Pipe

90/10 Copper Nickel

DIN 86019 / DIN 86018



Nominal Size (Inch) (mm)		ØA (mm)	10 BAR		14 BAR	
			W (mm)	Weight (Kg/Mtr)	W (mm)	Weight (Kg/Mtr)
Seamless						
1/2	15	20	1	0.53	1	0.53
3/4	20	25	1.5	0.99	1.5	0.99
1	25	30	1.5	1.2	1.5	1.2
1.1/4	32	38	1.5	1.54	1.5	1.54
1.1/2	40	44.5	1.5	1.81	1.5	1.81
2	50	57	1.5	2.34	1.5	2.34
2.1/2	65	76.1	2	4.16	2	4.16
3	80	88.9	2	4.88	2.5	6.07
4	100	108	2.5	7.41	2.5	7.41
5	125	133	2.5	9.16	3	10.95
6	150	159	2.5	10.99	3	13.14
7	175	193.7	2.5	13.43	3.5	18.7
8	200	219.1	3	18.21	3.5	21.19
10	250	267	3	22.24	4	29.55
12	300	323.9	4	35.94	5	44.78
14	350	368	4	40.89	5.5	56
16	400	419.1	4	46.63	6	69.61
Seamless or Seam Welded						
18	450	457.2	4	50.91	6	76.03
20	500	508	4.5	63.64	6.5	91.55
Seam Welded						
24	600	610	5	84.96	8	135.26
28	700	711	6	118.8	9	177.45
32	800	813	6	135.99	10	225.53
36	900	914	8	203.57	11	278.98



Marine Engineering Pipeworks Ltd.

Leechmere Industrial Estate, Grangetown, Sunderland, SR2 9TE, United Kingdom
 Tel: +44 191 521 1941 - Fax: +44 191 523 6954 - E-mail: Info@Mepsun.com - Web: www.Mepsun.com

Flanges

Manufactured in 90/10 Copper Nickel Alloy.

PN10 and PN16.

Dimensions to DIN Standards.

ANSI, BS, and JIS Standards are also available.

Solid Weld Neck Flanges

Pages 6 - 7

Composite Weld Neck Flanges

Pages 8 - 12

Solid Slip On Flanges

Pages 13 - 14

Solid Blind Flanges

Pages 15 - 16



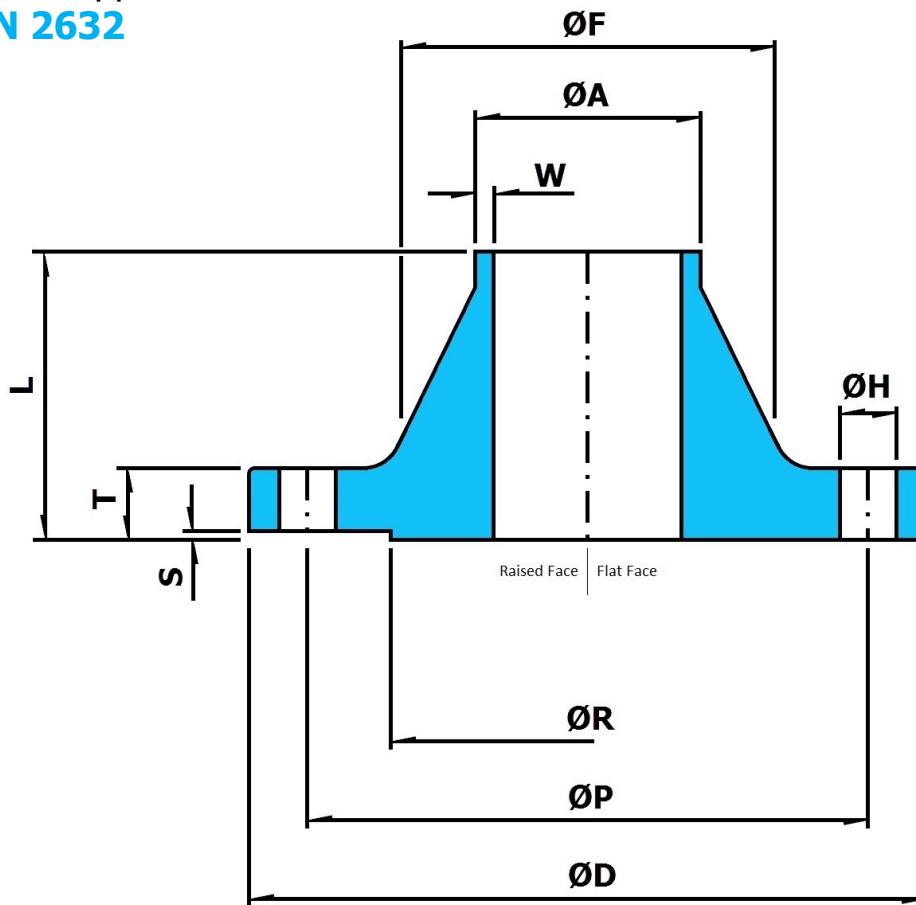
Marine Engineering Pipeworks Ltd.

Leechmere Industrial Estate, Grangetown, Sunderland, SR2 9TE, United Kingdom
Tel: +44 191 521 1941 - Fax: +44 191 523 6954 - E-mail: Info@Mepsun.com - Web: www.Mepsun.com

PN10 Solid Weld Neck Flange

90/10 Copper Nickel

DIN 2632



Please refer to Pipe (Page 4) for available values of wall thickness (W)

Nominal Size (Inch)	$\varnothing A$ (mm)	$\varnothing D$ (mm)	L (mm)	T (mm)	$\varnothing F$ (mm)	RF Only		Drilling			Weight (Kg)
						$\varnothing R$ (mm)	S (mm)	$\varnothing P$ (mm)	No. Of Holes	$\varnothing H$ (mm)	
1/2	20	95	35	14	30	45	2	65	4	14	0.74
3/4	25	105	38	16	38	58	2	75	4	14	1.08
1	30	115	38	16	42	68	2	85	4	14	1.3
1.1/4	38	140	40	16	52	78	2	100	4	18	1.92
1.1/2	44.5	150	42	16	60	88	3	110	4	18	2.11
2	57	165	45	18	72	102	3	125	4	18	2.88
2.1/2	76.1	185	45	18	90	122	3	145	4	18	3.48
3	88.9	200	50	20	105	138	3	160	8	18	4.2
4	108	220	52	20	125	158	3	180	8	18	5.25
5	133	250	55	22	150	188	3	210	8	18	7.15
6	159	285	55	22	175	212	3	240	8	22	8.8
7	193.7	315	60	24	210	242	3	270	8	22	11.19
8	219.1	340	62	24	235	268	3	295	8	22	12.84
10	267	395	68	26	285	320	3	350	12	22	16.7
12	323.9	445	68	26	344	370	4	400	12	22	19.77
14	368	505	68	26	385	430	4	460	16	22	26.81
16	419.1	565	72	26	440	482	4	515	16	26	32.49
18	457.2	615	72	28	488	532	4	565	20	26	38.1
20	508	670	75	28	542	585	4	620	20	26	43.28
24	610	780	80	28	642	685	5	725	20	30	50.67



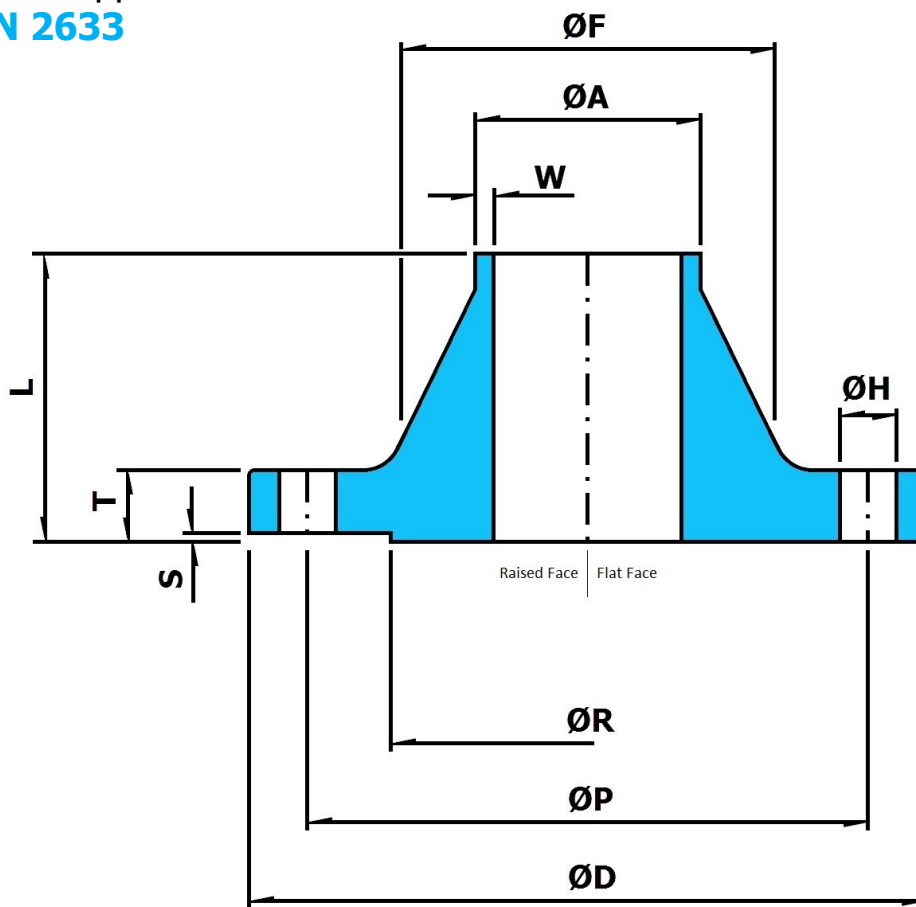
Marine Engineering Pipeworks Ltd.

Leechmere Industrial Estate, Grangetown, Sunderland, SR2 9TE, United Kingdom
 Tel: +44 191 521 1941 - Fax: +44 191 523 6954 - E-mail: Info@Mepsun.com - Web: www.Mepsun.com

PN16 Solid Weld Neck Flange

90/10 Copper Nickel

DIN 2633



Please refer to Pipe (Page 4) for available values of wall thickness (W)

Nominal Size (Inch)	ØA (mm)	ØD (mm)	L (mm)	T (mm)	ØF (mm)	RF Only		Drilling			Weight (Kg)
						ØR (mm)	S (mm)	ØP (mm)	No. Of Holes	ØH (mm)	
1/2	20	95	35	14	30	45	2	65	4	14	0.74
3/4	25	105	38	16	38	58	2	75	4	14	1.08
1	30	115	38	16	42	68	2	85	4	14	1.3
1.1/4	38	140	40	16	52	78	2	100	4	18	1.92
1.1/2	44.5	150	42	16	60	88	3	110	4	18	2.11
2	57	165	45	18	72	102	3	125	4	18	2.88
2.1/2	76.1	185	45	18	90	122	3	145	4	18	3.48
3	88.9	200	50	20	105	138	3	160	8	18	4.2
4	108	220	52	20	125	158	3	180	8	18	5.25
5	133	250	55	22	150	188	3	210	8	18	7.15
6	159	285	55	22	175	212	3	240	8	22	8.8
7	193.7	315	60	24	210	242	3	270	8	22	11.19
8	219.1	340	62	24	235	268	3	295	12	22	12.5
10	267	405	70	26	285	320	3	355	12	26	17.72
12	323.9	460	78	28	344	378	4	410	12	26	25
14	368	520	82	30	390	438	4	470	16	26	35.45
16	419.1	580	85	32	445	490	4	525	16	30	45.21
18	457.2	640	85	34	490	550	4	585	20	30	57.8
20	508	715	90	34	548	610	4	650	20	33	69.3
24	610	840	95	36	652	725	5	770	20	36	85.65



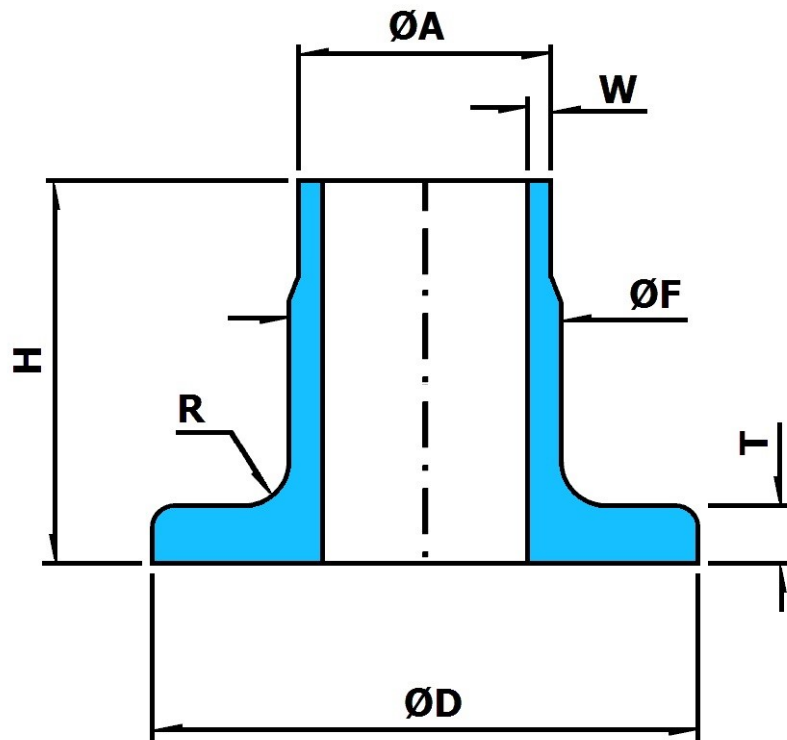
Marine Engineering Pipeworks Ltd.

Leechmere Industrial Estate, Grangetown, Sunderland, SR2 9TE, United Kingdom
 Tel: +44 191 521 1941 - Fax: +44 191 523 6954 - E-mail: Info@Mepsun.com - Web: www.Mepsun.com

Composite Weld Neck Inner Flange

90/10 Copper Nickel

DIN 86037



Nominal Size (Inch)	ØA (mm)	ØD (mm)	H (mm)	T (mm)	ØF (mm)	R (mm)	10 Bar		14 Bar	
							W (mm)	Weight (Kg)	W (mm)	Weight (Kg)
1/2	20	45	28	5	22	3	1	0.07	1.5	0.1
3/4	25	58	40	5	27	3	1.5	0.17	2	0.17
1	30	68	40	5	32	4	1.5	0.24	2	0.24
1.1/4	38	78	40	5	40	4	1.5	0.26	2	0.26
1.1/2	44.5	88	45	6	46.5	4	1.5	0.42	2	0.4
2	57	102	45	6	59	5	1.5	0.53	2	0.5
2.1/2	76.1	122	45	6	78	5	2	0.64	2	0.64
3	88.9	138	50	7	91	5	2	0.86	2.5	0.9
4	108	158	50	7	110	5	2.5	1.1	2.5	1.1
5	133	188	50	7	136	5	2.5	1.5	3	1.55
6	159	212	50	9	161.5	5	2.5	2	3	2.1
7	193.7	242	50	9	197	5	2.5	2.3	3.5	2.55
8	219.1	268	50	9	222	5	3	2.7	3.5	2.9
10	267	320	50	9	270	5	3	3.4	4	3.8
12	323.9	370	50	11	327	7	4	4.6	5	5.4
14	368	430	50	11	371	7	4	6.2	5.5	6.95
16	419.1	482	50	12	422	7	4	7.5	6	8.65
18	457.2	530	50	12	460	7	4	9	6	10.15
20	508	585	50	12	511	7	4.5	10.65	6.5	11.9
24	610	685	60	14	613	9	5	14.9	8	17.65



Marine Engineering Pipeworks Ltd.

Leechmere Industrial Estate, Grangetown, Sunderland, SR2 9TE, United Kingdom
 Tel: +44 191 521 1941 - Fax: +44 191 523 6954 - E-mail: Info@Mepsun.com - Web: www.Mepsun.com

Composite Weld Neck Inner Flange

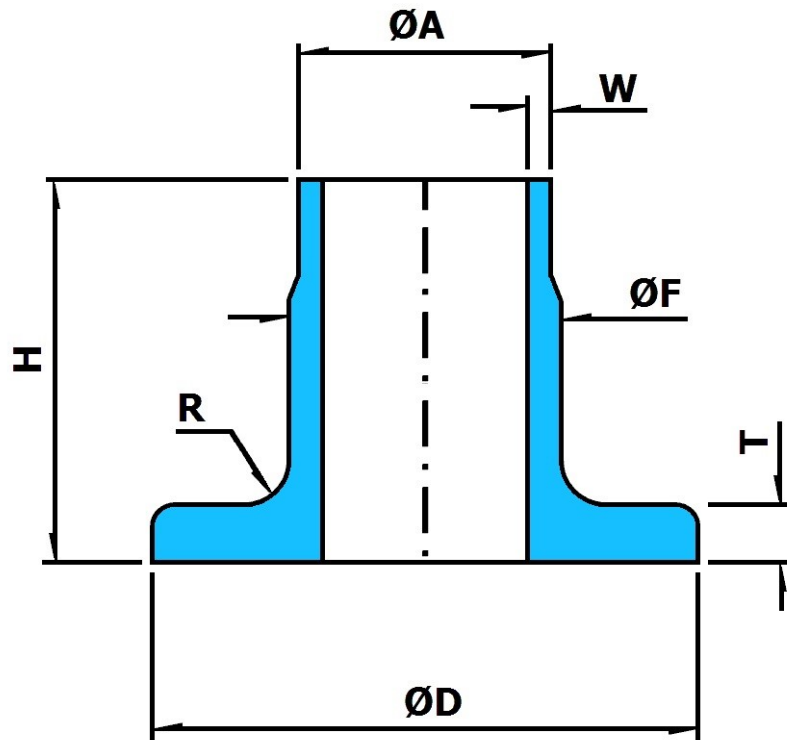
90/10 Copper Nickel

VG 85356

25mm - 38mm PN25

44.5mm - 159mm PN16

193.7mm - 323.9mm PN10



Nominal Size (Inch)	ØA (mm)	ØD (mm)	H (mm)	T (mm)	ØF (mm)	W (mm)	Weight (Kg)	W (mm)	Weight (Kg)
3/4	25	51	28	5	27	1.5	0.1	2	0.11
1	30	57	28	5	32	1.5	0.13	2	0.13
1.1/4	38	65	28	5	40	1.5	0.14	2	0.15
1.1/2	44.5	73	28	6	46.5	1.5	0.187	2	0.20
2	57	85	30	6	59	1.5	0.243	2	0.26
2.1/2	76.1	105	32	6	78	2	0.364	-	-
3	88.9	115	32	7	91	2	0.428	-	-
4	108	137	32	7	110	2.5	0.6	-	-
5	133	165	36	7	136	2.5	0.962	-	-
6	159	191	36	9	162	2.5	1.08	-	-
7	193.7	229	38	9	197	3	1.46	-	-
8	219.1	253	38	9	222	3	1.72	-	-
10	267	305	40	9	270	3	2.31	-	-
12	323.9	357	42	11	327	4	3	-	-



Marine Engineering Pipeworks Ltd.

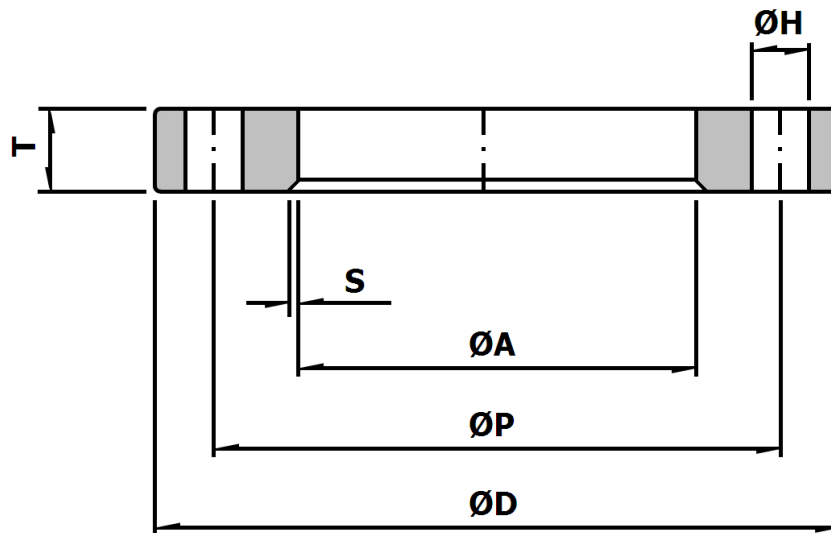
Leechmere Industrial Estate, Grangetown, Sunderland, SR2 9TE, United Kingdom
 Tel: +44 191 521 1941 - Fax: +44 191 523 6954 - E-mail: Info@Mepsun.com - Web: www.Mepsun.com

PN10 Composite Weld Neck Backing Flange

Galvanized Carbon Steel ST37.2 / S275

DIN 2642 / DIN 86037-3

Available Epoxy Coated



Nominal Size (Inch)	Pipe OD Size (mm)	ØD (mm)	T (mm)	ØA (mm)	S (mm)	Drilling			Weight (Kg)
						ØP (mm)	No. Of Holes	ØH (mm)	
For 1/2" to 7" sizes, refer to PN16									
8	219.1	340	20	225	5	295	8	22	7.46
10	267	395	22	273	5	350	12	22	10.3
12	323.9	445	24	331	7	400	12	22	12.1
14	368	505	24	375	7	460	16	22	15.7
16	419.1	565	26	426	7	515	16	26	20.1
18	457.2	615	28	465	7	565	20	26	25.4
20	508	670	30	517	7	620	20	26	30.8
24	610	780	32	618	9	725	20	30	40.5



Marine Engineering Pipeworks Ltd.

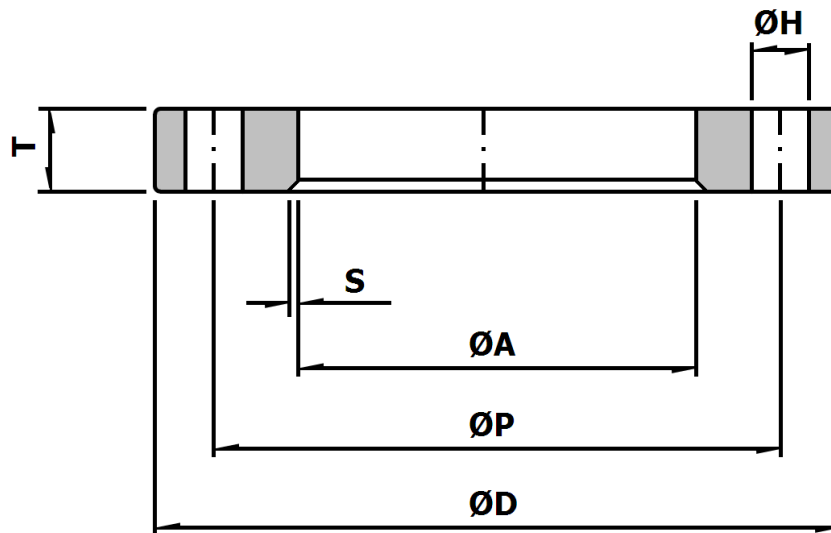
Leechmere Industrial Estate, Grangetown, Sunderland, SR2 9TE, United Kingdom
 Tel: +44 191 521 1941 - Fax: +44 191 523 6954 - E-mail: Info@Mepsun.com - Web: www.Mepsun.com

PN16 Composite Weld Neck Backing Flange

Galvanized Carbon Steel ST37.2 / S275

DIN 2643 / DIN 86037-3

Available Epoxy Coated



Nominal Size (Inch)	Pipe OD Size (mm)	ØD (mm)	T (mm)	ØA (mm)	S (mm)	Drilling			Weight (Kg)
						ØP (mm)	No. Of Holes	ØH (mm)	
1/2	20	95	14	23	3	65	4	14	0.6
3/4	25	105	14	28	3	75	4	14	0.81
1	30	115	16	33	4	85	4	14	1.11
1¼	38	140	16	42	4	100	4	18	1.64
1½	44.5	150	16	50	4	110	4	18	1.86
2	57	165	16	62	5	125	4	18	2.2
2½	76	185	16	81	5	145	4	18	2.62
3	89	200	18	94	5	160	8	18	3.32
4	108	220	18	113	5	180	8	18	3.67
5	133	250	18	138	5	210	8	18	4.54
6	159	285	18	164	5	240	8	22	5.6
7	193.7	315	22	200	5	270	8	22	7.5
8	219.1	340	22	225	5	295	12	22	8
10	267	405	24	273	5	355	12	26	12
12	323.9	460	28	331	7	410	12	26	16.1
14	368	520	32	375	7	470	16	26	23.4
16	419.1	580	36	426	7	525	16	30	30.9



Marine Engineering Pipeworks Ltd.

Leechmere Industrial Estate, Grangetown, Sunderland, SR2 9TE, United Kingdom
 Tel: +44 191 521 1941 - Fax: +44 191 523 6954 - E-mail: Info@Mepsun.com - Web: www.Mepsun.com

Composite Weld Neck Backing Flange

Galvanized Carbon Steel ST37.2 / S275

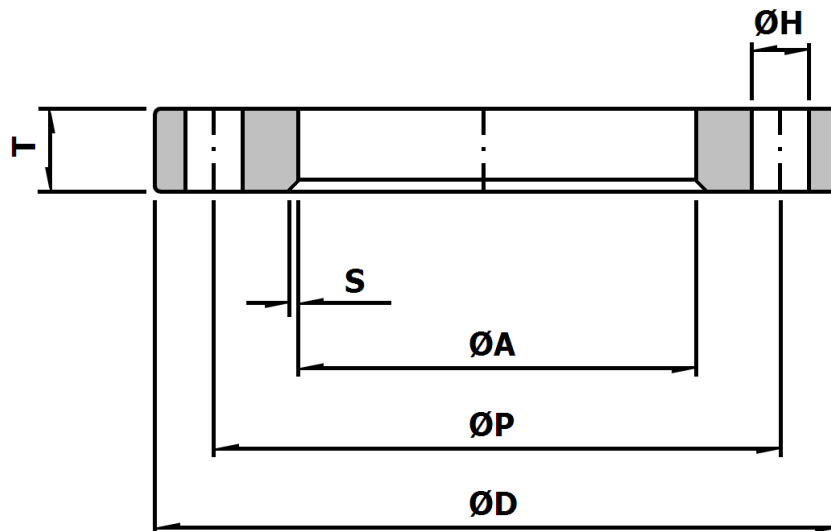
VG 85356

Available Epoxy Coated

25mm - 38mm PN25

44.5mm - 159mm PN16

193.7mm - 323.9mm PN10



Nominal Size (Inch)	Pipe OD Size (mm)	ØD (mm)	T (mm)	ØA (mm)	Drilling			Weight (Kg)
					ØP (mm)	No. Of Holes	ØH (mm)	
3/4	25	86	10	28	62	4	10	0.39
1	30	92	10	33	68	4	10	0.42
1.1/4	38	100	10	42	76	6	10	0.46
1.1/2	44.5	108	10	50	84	6	10	0.532
2	57	120	10	62	96	6	12	0.641
2.1/2	76.1	140	10	81	116	8	14	0.753
3	88.9	150	10	94	126	8	14	0.782
4	108	172	12	113	148	10	16	1.16
5	133	200	12	138	176	10	18	1.47
6	159	226	12	164	202	12	18	1.68
7	193.7	264	12	200	240	14	18	2.09
8	219.1	288	14	225	264	16	20	2.66
10	267	340	16	273	316	20	22	3.87
12	323.9	392	16	331	368	24	22	4.2



Marine Engineering Pipeworks Ltd.

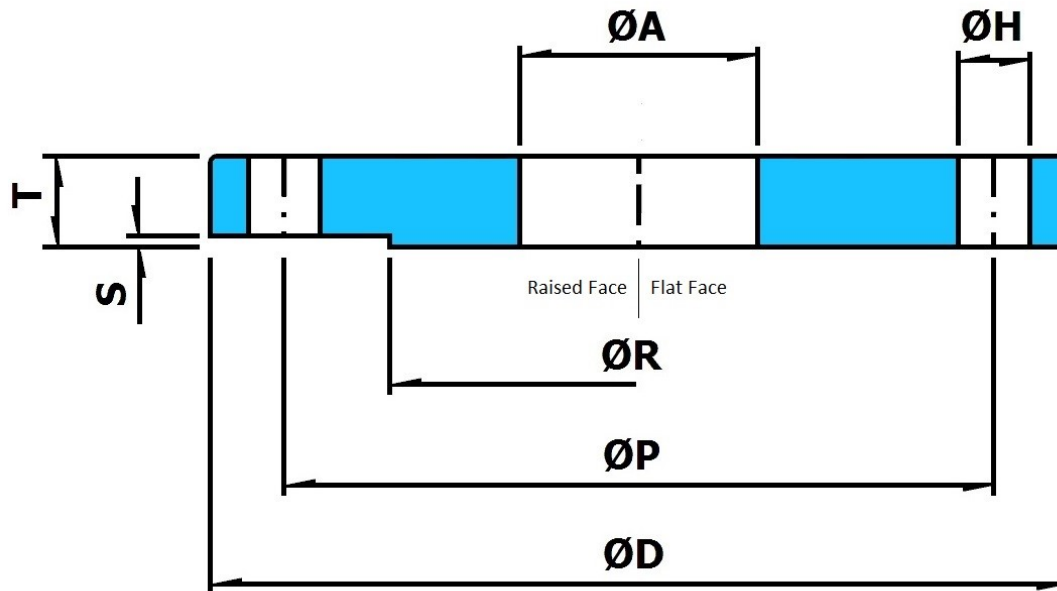
Leechmere Industrial Estate, Grangetown, Sunderland, SR2 9TE, United Kingdom
 Tel: +44 191 521 1941 - Fax: +44 191 523 6954 - E-mail: Info@Mepsun.com - Web: www.Mepsun.com

PN10 Solid Slip On Flange

90/10 Copper Nickel

DIN 2576

Also available to EN1092-3 Dimensions.



Nominal Size (Inch)	Pipe OD Size (mm)	ØD (mm)	T (mm)	ØA (mm)	ØR (mm)	S (mm)	Drilling			Weight (Kg)
							ØP (mm)	No. Of Holes	ØH (mm)	
1/2	20	95	14	20.2	45	2	65	4	14	0.77
3/4	25	105	16	25.2	58	2	75	4	14	1.08
1	30	115	16	30.2	68	2	85	4	14	1.29
1.1/4	38	140	16	38.25	78	2	100	4	18	1.89
1.1/2	44.5	150	16	44.75	88	3	110	4	18	2.15
2	57	165	18	57.3	102	3	125	4	18	2.85
2.1/2	76.1	185	18	76.3	122	3	145	4	18	3.42
3	88.9	200	20	89.4	138	3	160	8	18	4.12
4	108	220	20	108.4	158	3	180	8	18	4.77
5	133	250	22	133.65	188	3	210	8	18	6.48
6	159	285	22	159.65	212	3	240	8	22	7.99
7	193.7	315	24	195	242	3	270	8	22	9.63
8	219.1	340	24	220	268	3	295	8	22	10.64
10	267	395	26	268.2	320	3	350	12	22	14.25
12	323.9	445	26	325.35	370	4	400	12	22	15.72
14	368	505	28	369.35	430	4	460	16	22	21.73
16	419.1	565	32	420.5	482	4	515	16	26	29.48
18	457.2	615	38	458.5	532	4	565	20	26	41.09
20	508	670	38	509.5	585	4	620	20	26	46.76
24	610	780	40	612	685	5	725	20	30	60.44



Marine Engineering Pipeworks Ltd.

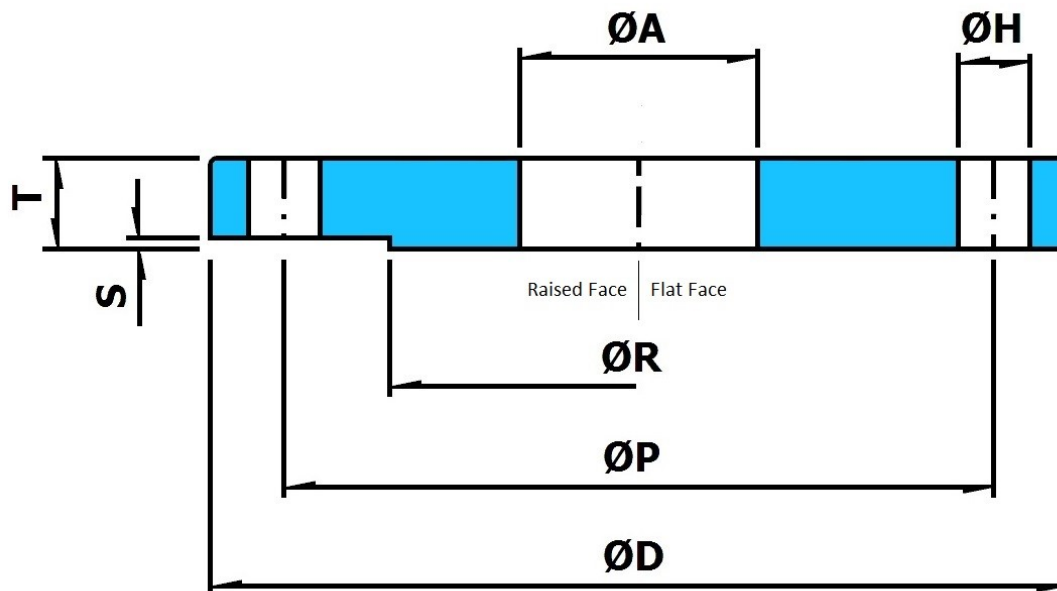
Leechmere Industrial Estate, Grangetown, Sunderland, SR2 9TE, United Kingdom
 Tel: +44 191 521 1941 - Fax: +44 191 523 6954 - E-mail: Info@Mepsun.com - Web: www.Mepsun.com

PN16 Solid Slip On Flange

90/10 Copper Nickel

DIN 2543

Also available to EN1092-3 Dimensions.



Nominal Size (Inch)	Pipe OD Size (mm)	ØD (mm)	T (mm)	ØA (mm)	ØR (mm)	S (mm)	Drilling			Weight (Kg)
							ØP (mm)	No. Of Holes	ØH (mm)	
1/2	20	95	14	20.2	45	2	65	4	14	0.77
3/4	25	105	16	25.2	58	2	75	4	14	1.08
1	30	115	16	30.2	68	2	85	4	14	1.29
1.1/4	38	140	16	38.25	78	2	100	4	18	1.89
1.1/2	44.5	150	16	44.75	88	3	110	4	18	2.15
2	57	165	18	57.3	102	3	125	4	18	2.85
2.1/2	76.1	185	18	76.3	122	3	145	4	18	3.42
3	88.9	200	20	89.4	138	3	160	8	18	4.12
4	108	220	20	108.4	158	3	180	8	18	4.77
5	133	250	22	133.65	188	3	210	8	18	6.48
6	159	285	22	159.65	212	3	240	8	22	7.99
7	193.7	315	24	195	242	3	270	8	22	9.63
8	219.1	340	24	220	268	3	295	12	22	10.31
10	267	405	26	268.2	320	3	355	12	26	15.28
12	323.9	460	28	325.35	378	4	410	12	26	19.14
14	368	520	30	369.35	438	4	470	16	26	25.86
16	419.1	580	32	420.5	490	4	525	16	30	32.52



Marine Engineering Pipeworks Ltd.

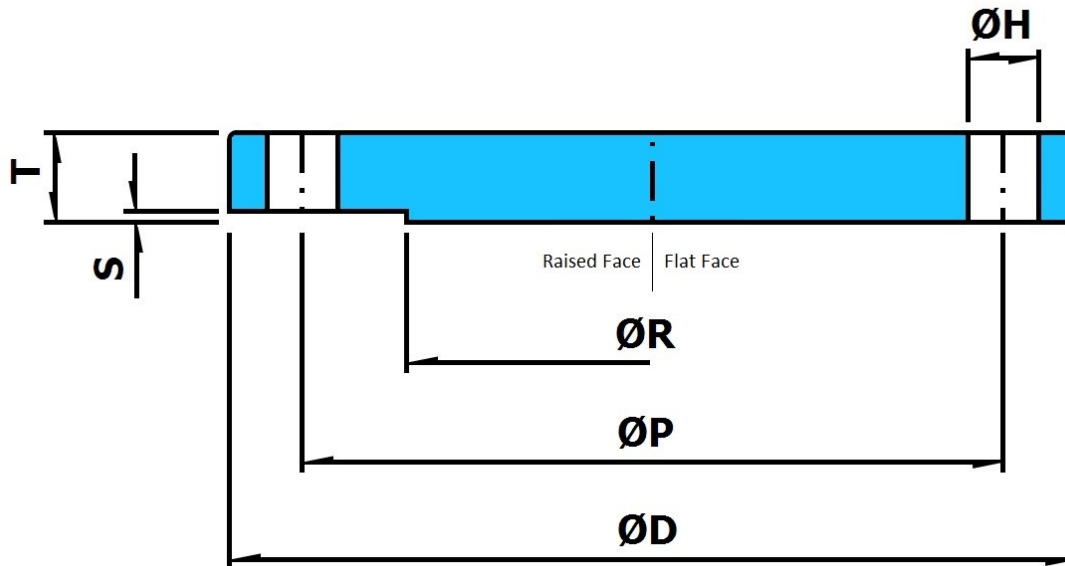
Leechmere Industrial Estate, Grangetown, Sunderland, SR2 9TE, United Kingdom
 Tel: +44 191 521 1941 - Fax: +44 191 523 6954 - E-mail: Info@Mepsun.com - Web: www.Mepsun.com

PN10 Solid Blind Flange

90/10 Copper Nickel

DIN 2527

Also available to EN1092-3 Dimensions.



Nominal Size (Inch)	Pipe OD Size (mm)	ØD (mm)	T (mm)	ØR (mm)	S (mm)	Drilling			Weight (Kg)
						ØP (mm)	No. Of Holes	ØH (mm)	
1/2	20	95	14	45	2	65	4	14	0.81
3/4	25	105	16	58	2	75	4	14	1.15
1	30	115	16	68	2	85	4	14	1.39
1.1/4	38	140	16	78	2	100	4	18	2.05
1.1/2	44.5	150	16	88	3	110	4	18	2.37
2	57	165	18	102	3	125	4	18	3.27
2.1/2	76.1	185	18	122	3	145	4	18	4.15
3	88.9	200	20	138	3	160	8	18	5.24
4	108	220	20	158	3	180	8	18	6.41
5	133	250	22	188	3	210	8	18	9.23
6	159	285	22	212	3	240	8	22	11.91
7	193.7	315	24	242	3	270	8	22	16.02
8	219.1	340	24	268	3	295	8	22	18.77
10	267	395	26	320	3	350	12	22	27.34
12	323.9	445	28	370	3	400	12	22	34.98
14	368	505	30	430	3	460	16	22	45.01
16	419.1	565	32	482	3	515	16	26	56.13
18	457.2	615	32	532	3	565	20	26	71.48
20	508	670	32	585	4	620	20	26	85.33
24	610	780	34	685	5	725	20	30	123.98



Marine Engineering Pipeworks Ltd.

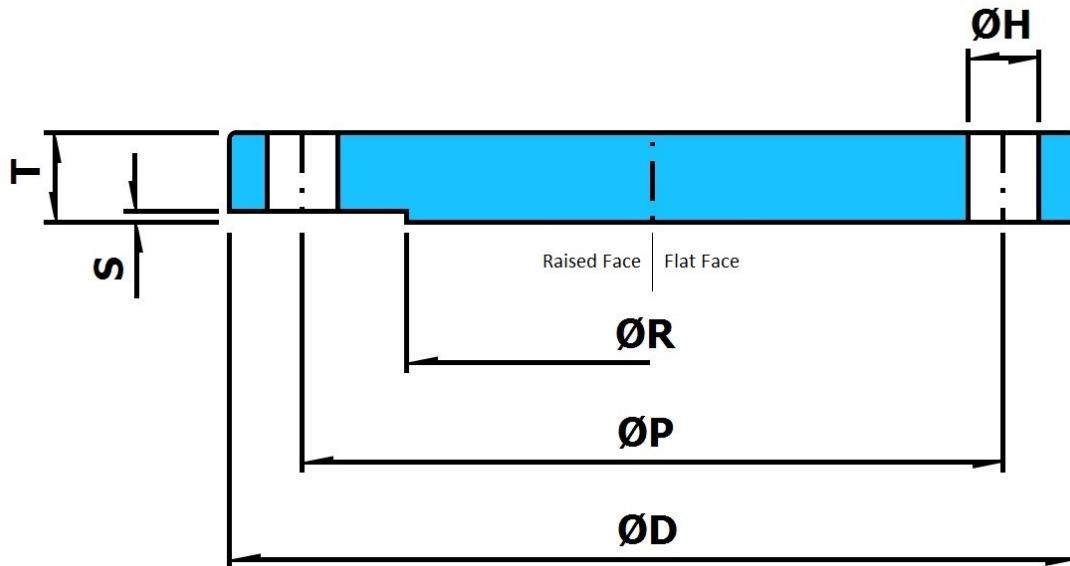
Leechmere Industrial Estate, Grangetown, Sunderland, SR2 9TE, United Kingdom
 Tel: +44 191 521 1941 - Fax: +44 191 523 6954 - E-mail: Info@Mepsun.com - Web: www.Mepsun.com

PN16 Solid Blind Flange

90/10 Copper Nickel

DIN 2527

Also available to EN1092-3 Dimensions.



Nominal Size (Inch)	Pipe OD Size (mm)	ØD (mm)	T (mm)	ØR (mm)	S (mm)	Drilling			Weight (Kg)
						ØP (mm)	No. Of Holes	ØH (mm)	
1/2	20	95	14	45	2	65	4	14	0.81
3/4	25	105	16	58	2	75	4	14	1.15
1	30	115	16	68	2	85	4	14	1.39
1.1/4	38	140	16	78	2	100	4	18	2.05
1.1/2	44.5	150	16	88	3	110	4	18	2.37
2	57	165	18	102	3	125	4	18	3.27
2.1/2	76.1	185	18	122	3	145	4	18	4.15
3	88.9	200	20	138	3	160	8	18	5.24
4	108	220	20	158	3	180	8	18	6.41
5	133	250	22	188	3	210	8	18	9.23
6	159	285	22	212	3	240	8	23	11.91
7	193.7	315	24	242	3	270	8	23	16.02
8	219.1	340	24	268	3	295	12	23	18.45
10	267	405	26	320	3	355	12	27	28.38
12	323.9	460	28	378	4	410	12	27	39.88
14	368	520	30	438	4	470	16	27	54.51
16	419.1	580	32	490	4	525	16	30	72.13
18	457.2	640	34	550	4	585	20	30	98.68
20	508	715	36	610	4	650	20	33	123.34
24	610	840	38	725	5	770	20	36	180.79



Marine Engineering Pipeworks Ltd.

Leechmere Industrial Estate, Grangetown, Sunderland, SR2 9TE, United Kingdom
 Tel: +44 191 521 1941 - Fax: +44 191 523 6954 - E-mail: Info@Mepsun.com - Web: www.Mepsun.com

Butt Weld Fittings

Manufactured in 90/10 Copper Nickel Alloy.
Dimensions to DIN standards.

90° Long Radius Elbows	Page 18
45° Long Radius Elbows	Page 19
90° Short Radius Elbows	Page 20
End Caps	Page 21
Equal Tees	Page 22
Reducing Tees	Pages 23 - 24
Concentric Reducers	Pages 25 - 27
Eccentric Reducers	Pages 28 - 30
Saddles	Pages 31 - 34



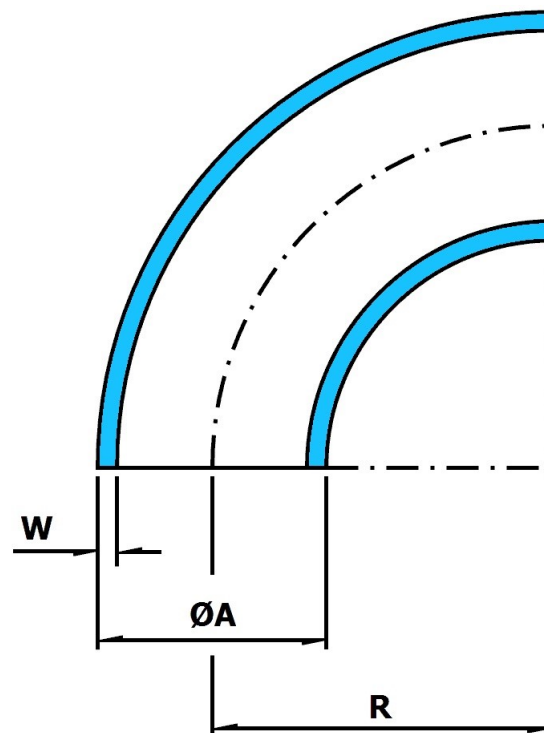
Marine Engineering Pipeworks Ltd.

Leechmere Industrial Estate, Grangetown, Sunderland, SR2 9TE, United Kingdom
Tel: +44 191 521 1941 - Fax: +44 191 523 6954 - E-mail: Info@Mepsun.com - Web: www.Mepsun.com

90° Long Radius Butt Weld Elbows

90/10 Copper Nickel

DIN 86090



Nominal Size (Inch) (mm)		ØA (mm)	R (mm)	10 BAR		14 BAR	
				W (mm)	Weight (Kg)	W (mm)	Weight (Kg)
Seamless							
1/2	15	20	25	1	0.02	1	0.02
3/4	20	25	27.5	1.5	0.04	1.5	0.04
1	25	30	33.5	1.5	0.06	1.5	0.06
1.1/4	32	38	45	1.5	0.1	1.5	0.1
1.1/2	40	44.5	51	1.5	0.14	1.5	0.14
2	50	57	72	1.5	0.26	1.5	0.26
2.1/2	65	76.1	95	2	0.61	2	0.61
3	80	88.9	114.5	2	0.87	2.5	1.08
4	100	108	142.5	2.5	1.64	2.5	1.64
5	125	133	181	2.5	2.58	3	3.1
6	150	159	216	2.5	3.7	3	4.44
7	175	193.7	270	2.5	5.65	3.5	7.88
8	200	219.1	305	3	8.66	3.5	10.08
10	250	267	378	3	13.1	4	17.46
12	300	323.9	457	4	25.81	5	32
Seamless or Seam Welded							
14	350	368	533.5	4	34	5.5	46.74
16	400	419.1	609.5	4	39.4	6	66.4
Seam Welded							
18	450	457.2	686	4	48.4	6	72.63
20	500	508	762	4.5	75.82	6.5	125.7
24	600	610	915	5	121.2	8	194



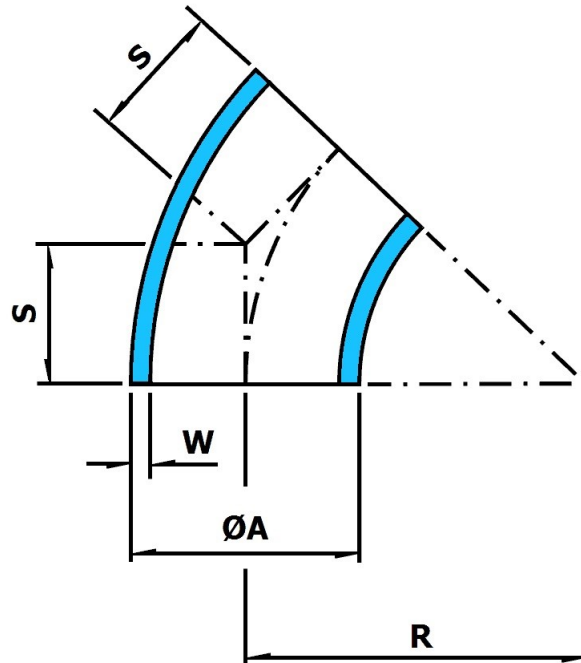
Marine Engineering Pipeworks Ltd.

Leechmere Industrial Estate, Grangetown, Sunderland, SR2 9TE, United Kingdom
 Tel: +44 191 521 1941 - Fax: +44 191 523 6954 - E-mail: Info@Mepsun.com - Web: www.Mepsun.com

45° Long Radius Butt Weld Elbows

90/10 Copper Nickel

DIN 86090



Nominal Size (Inch)	(mm)	ØA (mm)	R (mm)	S (mm)	10 BAR		14 BAR	
					W (mm)	Weight (Kg)	W (mm)	Weight (Kg)
Seamless								
1/2	15	20	25	10.4	1	0.01	1	0.01
3/4	20	25	27.5	11.4	1.5	0.02	1.5	0.02
1	25	30	33.5	14	1.5	0.03	1.5	0.03
1.1/4	32	38	45	19	1.5	0.05	1.5	0.05
1.1/2	40	44.5	51	21	1.5	0.07	1.5	0.07
2	50	57	72	30	1.5	0.13	1.5	0.13
2.1/2	65	76.1	95	39	2	0.3	2	0.3
3	80	88.9	114.5	47	2	0.43	2.5	0.54
4	100	108	142.5	59	2.5	0.82	2.5	0.82
5	125	133	181	75	2.5	1.29	3	1.55
6	150	159	216	89	2.5	1.85	3	2.22
7	175	193.7	270	112	2.5	2.82	3.5	3.94
8	200	219.1	305	126	3	4.33	3.5	5.04
10	250	267	378	157	3	6.55	4	6.73
12	300	323.9	457	189	4	12.8	5	16
Seamless or Seam Welded								
14	350	368	533.5	221	4	17	5.5	23.37
16	400	419.1	609.5	252	4	29.9	6	33.2
Seam Welded								
18	450	457.2	686	284	4	30.7	6	46.05
20	500	508	762	316	4.5	41.9	6.5	62.85
24	600	610	915	379	5	60.82	8	97



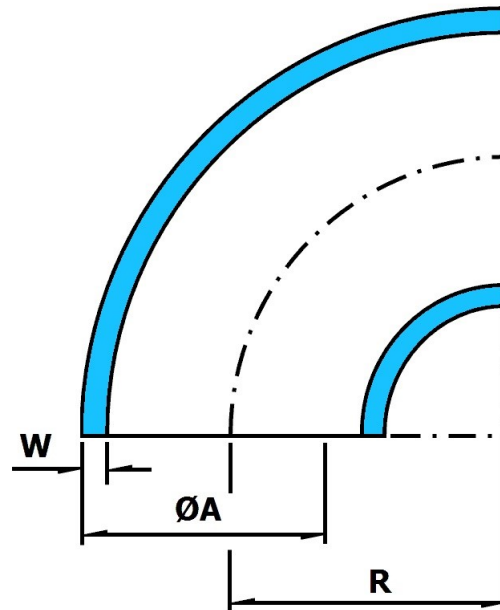
Marine Engineering Pipeworks Ltd.

Leechmere Industrial Estate, Grangetown, Sunderland, SR2 9TE, United Kingdom
 Tel: +44 191 521 1941 - Fax: +44 191 523 6954 - E-mail: Info@Mepsun.com - Web: www.Mepsun.com

90° Short Radius Butt Weld Elbows

90/10 Copper Nickel

DIN 86090



Nominal Size (Inch) (mm)		ØA (mm)	R (mm)	10 BAR		14 BAR	
				W (mm)	Weight (Kg/Mtr)	W (mm)	Weight (Kg/Mtr)
Seamless							
1	25	30	30	1.5	0.04	1.5	0.04
1.1/4	32	38	32.5	1.5	0.08	1.5	0.08
1.1/2	40	44.5	40	1.5	0.12	1.5	0.12
2	50	57	52.5	1.5	0.2	1.5	0.2
2.1/2	65	76.1	70	2	0.44	2	0.44
3	80	88.9	82.5	2	0.64	2.5	0.8
4	100	108	100	2.5	1.16	2.5	1.16
5	125	133	125	2.5	1.8	3	2.16
6	150	159	150	2.5	2.6	3	3.12
7	175	193.7	180	2.5	3.8	3.5	5.32
8	200	219.1	210	3	6	3.5	7
Seamless or Seam Welded							
10	250	267	255	3	8.8	4	11.74
12	300	323.9	305	4	17.2	5	21.5
14	350	368	352.5	4	22.8	5.5	31.08
Seam Welded							
16	400	419.1	400	4	32.8	6	43.74
18	450	457.2	455	4	40.8	6	61.2
20	500	508	505	4.5	58.2	6.5	84.3
24	600	610	610	5	81.8	8	130.9



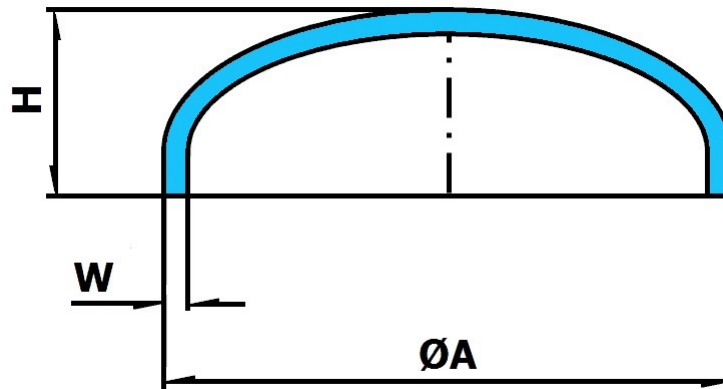
Marine Engineering Pipeworks Ltd.

Leechmere Industrial Estate, Grangetown, Sunderland, SR2 9TE, United Kingdom
 Tel: +44 191 521 1941 - Fax: +44 191 523 6954 - E-mail: Info@Mepsun.com - Web: www.Mepsun.com

Butt Weld End Caps

90/10 Copper Nickel

DIN 28011



Nominal Size (Inch) (mm)		ØA (mm)	10 Bar			14 Bar		
			W (mm)	H (mm)	Weight (Kg)	W (mm)	H (mm)	Weight (Kg)
1	25	30	1.5	19	0.07	1.5	19	0.07
1.1/4	32	38	1.5	619	0.1	1.5	619	0.1
1.1/2	40	44.5	1.5	22	0.12	1.5	22	0.12
2	50	57	1.5	28	0.18	1.5	28	0.18
2.1/2	65	76.1	2	32	0.31	2	32	0.31
3	80	88.9	2	36	0.39	2.5	40	0.75
4	100	108	2.5	40	0.75	2.5	40	0.75
5	125	133	2.5	44	0.95	3	44	1.2
6	150	159	2.5	49	1.35	3	49	1.6
7	175	193.7	2.5	56	1.95	3	56	2.4
8	200	219.1	3	61	2.6	3.5	61	3.1
10	250	267	3	70	3.85	4	70	4.85
12	300	323.9	4	81	6.6	5	81	8.2
14	350	368	4	89	8.8	5.5	89	12.6
16	400	419.1	4	99	12.2	6	104	17.4
18	450	457.2	4	107	12.55	6	112	17.9
20	500	508	4.5	116	18.8	6.5	121	26.35
24	600	610	5	135	26.7	8	150	49.5



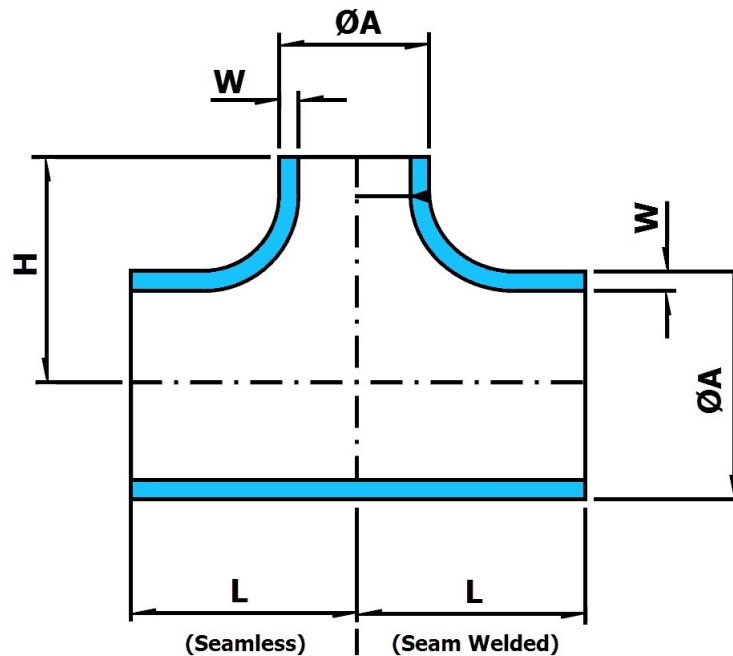
Marine Engineering Pipeworks Ltd.

Leechmere Industrial Estate, Grangetown, Sunderland, SR2 9TE, United Kingdom
 Tel: +44 191 521 1941 - Fax: +44 191 523 6954 - E-mail: Info@Mepsun.com - Web: www.Mepsun.com

Butt Weld Equal Tee

90/10 Copper Nickel

DIN 86088



Nominal Size (Inch)	(mm)	ØA (mm)	L (mm)	H (mm)	16 Bar		20 Bar	
					W (mm)	Weight (Kg)	W (mm)	Weight (Kg)
Seamless								
1/2	15	20	25	25	1	0.05	1	0.05
3/4	20	25	29	29	1.5	0.07	1.5	0.07
1	25	30	38	38	1.5	0.1	1.5	0.1
1.1/4	32	38	48	48	1.5	0.13	1.5	0.13
1.1/2	40	44.5	57	57	1.5	0.19	1.5	0.19
2	50	57	64	64	1.5	0.29	1.5	0.29
2.1/2	65	76.1	76	76	2	0.65	2	0.65
3	80	88.9	86	86	2	0.82	2.5	1.03
4	100	108	105	105	2.5	1.6	2.5	1.6
5	125	133	124	124	2.5	2.8	3	3.36
6	150	159	143	143	2.5	4.4	3	5.28
7	175	193.7	157	157	2.5	4.7	3	6.6
8	200	219.1	178	178	3	12	3.5	14.95
10	250	267	216	216	3	16.6	4	22.1
Seamless or Seam Welded								
12	300	323.9	254	254	4	31.5	5	39.4
14	350	368	279	279	4	39.4	5.5	54.2
16	400	419.1	305	305	4	55.1	6	82.65
18	450	457.2	343	343	4	67.55	6	101.5
20	500	508	381	381	4.5	92.8	6.5	134.1
24	600	610	432	432	5	126.6	8	202.6



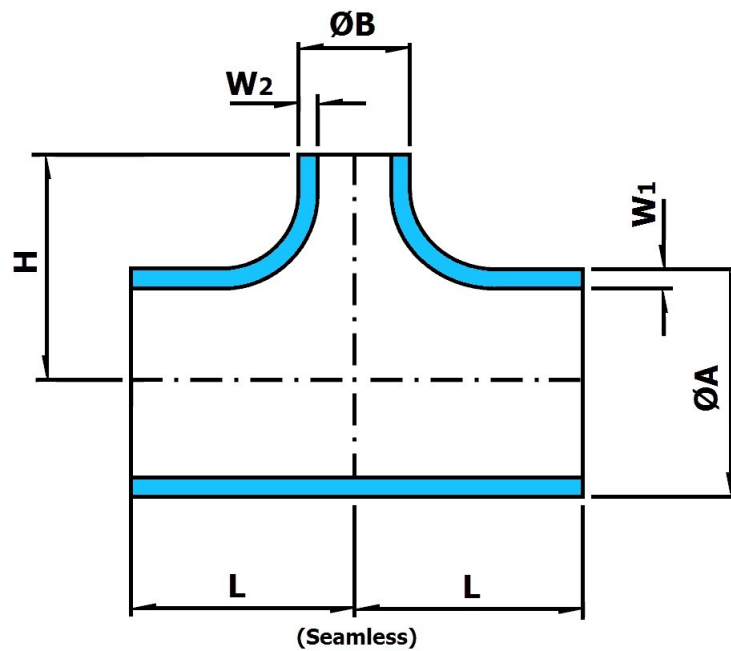
Marine Engineering Pipeworks Ltd.

Leechmere Industrial Estate, Grangetown, Sunderland, SR2 9TE, United Kingdom
 Tel: +44 191 521 1941 - Fax: +44 191 523 6954 - E-mail: Info@Mepsun.com - Web: www.Mepsun.com

Butt Weld Reducing Tee

90/10 Copper Nickel

DIN 86088



Nominal Size (Inch) (Inch)	ØA (mm)	ØB (mm)	L (mm)	H (mm)	10 Bar			14 Bar		
					W1 (mm)	W2 (mm)	Weight (Kg)	W1 (mm)	W2 (mm)	Weight (Kg)
Seamless										
1.1/4 x 1	38	30	48	42	1.5	1.5	0.1	1.5	1.5	0.1
1.1/2 x 1	44.5	30	57	45	1.5	1.5	0.21	1.5	1.5	0.21
1.1/2 x 1.1/4	44.5	38	57	51	1.5	1.5	0.21	1.5	1.5	0.21
2 x 1	57	30	64	51	1.5	1.5	0.32	1.5	1.5	0.32
2 x 1.1/4	57	38	64	57	1.5	1.5	0.32	1.5	1.5	0.32
2 x 1.1/2	57	44.5	64	63	1.5	1.5	0.32	1.5	1.5	0.32
2.1/2 x 1	76.1	30	76	56	2	1.5	0.65	2	1.5	0.65
2.1/2 x 1.1/4	76.1	38	76	62	2	1.5	0.65	2	1.5	0.65
2.1/2 x 1.1/2	76.1	44.5	76	71	2	1.5	0.67	2	1.5	0.67
2.1/2 x 2	76.1	57	76	73	2	1.5	0.67	2	1.5	0.67
3 x 1.1/4	88.9	38	86	73	2	1.5	0.87	2.5	1.5	1.08
3 x 1.1/2	88.9	44.5	86	76	2	1.5	0.87	2.5	1.5	1.08
3 x 2	88.9	57	86	80	2	1.5	0.89	2.5	1.5	1.1
3 x 2.1/2	88.9	76.1	86	83	2	2	0.92	2.5	2	1.15
4 x 1.1/2	108	44.5	105	89	2.5	1.5	1.6	2.5	1.5	1.6
4 x 2	108	57	105	90	2.5	1.5	1.6	2.5	1.5	1.6
4 x 2.1/2	108	76.1	105	92	2.5	2	1.65	2.5	2	1.65
4 x 3	108	88.9	105	96	2.5	2	1.65	2.5	2.5	1.65
5 x 2	133	57	124	98	2.5	1.5	3	3	1.5	3.6
5 x 2.1/2	133	76.1	124	105	2.5	2	3.1	3	2	3.7
5 x 3	133	88.9	124	108	2.5	2	3.25	3	2.5	3.9
5 x 4	133	108	124	117	2.5	2.5	3.3	3	2.5	3.95
6 x 2.1/2	159	76.1	143	118	2.5	2	4.4	3	2	5.25
6 x 3	159	88.9	143	121	2.5	2	1.5	3	2.5	5.4
6 x 4	159	108	143	130	2.5	2.5	4.6	3	2.5	5.5
6 x 5	159	133	143	136	2.5	2.5	4.6	3	2.5	5.5
8 x 4	219.1	108	178	156	3	2.5	12.6	3.5	2.5	14.75
8 x 5	219.1	133	178	162	3	2.5	12.7	3.5	3	14.85
8 x 6	219.1	159	178	168	3	2.5	12.8	3.5	3	14.95



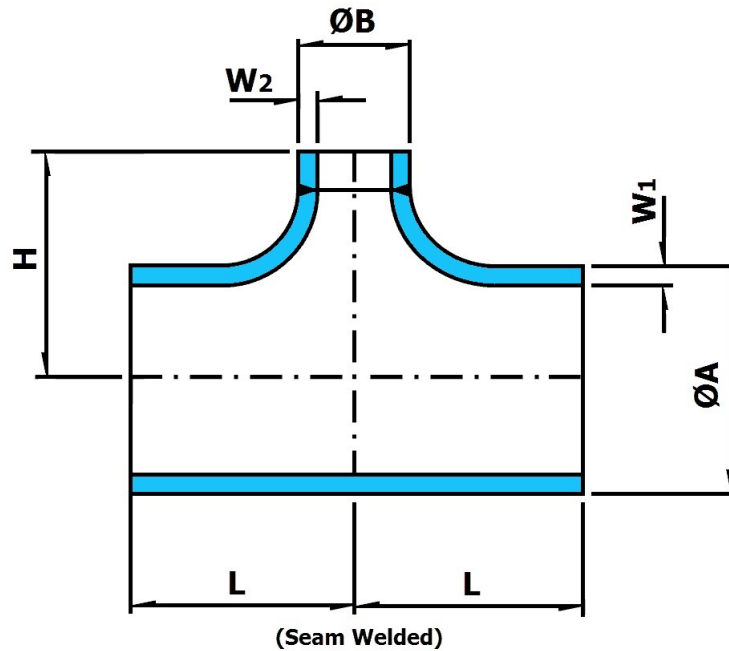
Marine Engineering Pipeworks Ltd.

Leechmere Industrial Estate, Grangetown, Sunderland, SR2 9TE, United Kingdom
 Tel: +44 191 521 1941 - Fax: +44 191 523 6954 - E-mail: Info@Mepsun.com - Web: www.Mepsun.com

Butt Weld Reducing Tee

90/10 Copper Nickel

DIN 86088



Nominal Size (Inch)	Inch	ØA (mm)	ØB (mm)	L (mm)	H (mm)	10 Bar			14 Bar		
						W1 (mm)	W2 (mm)	Weight (Kg)	W1 (mm)	W2 (mm)	Weight (Kg)
Seamless or Seam Welded											
10	x	4	267 x 108	194	209	3	2.5	12.5	4	2.5	16.7
10	x	5	267 x 133	217	219	3	2.5	13.5	4	3	18
10	x	6	267 x 159	240	228	3	2.5	14.8	4	3	19.75
10	x	7	267 x 193.7	267	243	3	2.5	15.2	4	3.5	20.25
10	x	8	267 x 219.1	290	259	3	3	16.6	4	3.5	22.1
12	x	5	323.9 x 133	217	247	4	2.5	28.6	5	3	35.75
12	x	6	323.9 x 159	240	257	4	2.5	30.45	5	3	38
12	x	7	323.9 x 193.7	267	272	4	2.5	32.6	5	3.5	40.75
12	x	8	323.9 x 219.1	290	287	4	3	34.6	5	3	43.25
12	x	10	323.9 x 267	324	317	4	3	37.8	5	4	47.25
14	x	6	368 x 159	240	279	4	2.5	37.4	5.5	3	51.4
14	x	7	368 x 193.7	267	294	4	2.5	39.85	5.5	3	54.2
14	x	8	368 x 219.1	290	309	4	3	42.1	5.5	3.5	57.9
14	x	10	368 x 267	324	339	4	3	45.55	5.5	4	62.65
14	x	12	368 x 323.9	380	369	4	4	52	5.5	5	71.5
16	x	7	419.1 x 193.7	267	319	4	2.5	49.1	6	3.5	73.85
16	x	8	419.1 x 219.1	290	335	4	3	52.1	6	3.5	78.15
16	x	10	419.1 x 267	324	365	4	3	56.4	6	4	84.6
16	x	12	419.1 x 323.9	380	395	4	4	64.8	6	5	97.2
16	x	14	419.1 x 368	407	410	4	4	68.9	6	5.5	103.35
18	x	10	457.2 x 267	324	383	4	3	55.7	6	4	83.55
18	x	12	457.2 x 323.9	380	413	4	4	64.6	6	5	96.9
18	x	14	457.2 x 368	407	428	4	4	68.9	6	5.5	103.35
18	x	16	457.2 x 419.1	440	453	4	4	74.6	6	6	111.9
20	x	12	508 x 323.9	380	439	4.5	4	72.5	6.5	5	104.7
20	x	14	508 x 368	407	454	4.5	4	77.4	6.5	5.5	111.8
20	x	16	508 x 419.1	440	479	4.5	4	83.9	6.5	6	121.2
20	x	18	508 x 457.2	500	509	4.5	4	94.1	6.5	6	135.9



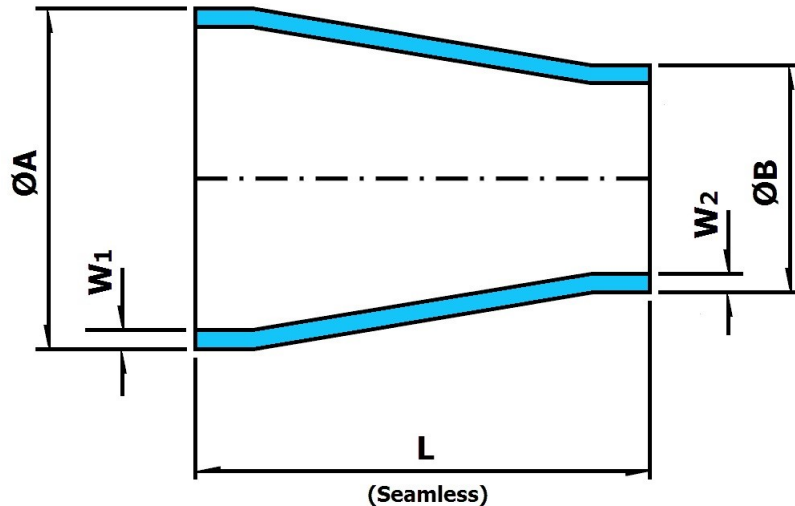
Marine Engineering Pipeworks Ltd.

Leechmere Industrial Estate, Grangetown, Sunderland, SR2 9TE, United Kingdom
 Tel: +44 191 521 1941 - Fax: +44 191 523 6954 - E-mail: Info@Mepsun.com - Web: www.Mepsun.com

Butt Weld Concentric Reducer

90/10 Copper Nickel

DIN 86089



Nominal Size (Inch)	Nominal Size (Inch)	ØA (mm)	ØB (mm)	L (mm)	10 Bar			14 Bar		
					W1 (mm)	W2 (mm)	Weight (Kg)	W1 (mm)	W2 (mm)	Weight (Kg)
Seamless										
3/4	x 1/2	25	x 20	30	1.5	1	0.03	1.5	1	0.03
1	x 1/2	30	x 20	35	1.5	1	0.04	1.5	1	0.04
1	x 3/4	30	x 25	35	1.5	1.5	0.05	1.5	1.5	0.05
1.1/4	x 1/2	38	x 20	50	1.5	1	0.06	1.5	1	0.06
1.1/4	x 3/4	38	x 25	50	1.5	1.5	0.07	1.5	1.5	0.07
1.1/4	x 1	38	x 30	50	1.5	1.5	0.08	1.5	1.5	0.08
1.1/2	x 1/2	44.5	x 20	80	1.5	1	0.09	1.5	1	0.09
1.1/2	x 3/4	44.5	x 25	80	1.5	1.5	0.11	1.5	1.5	0.11
1.1/2	x 1	44.5	x 30	80	1.5	1.5	0.12	1.5	1.5	0.12
1.1/2	x 1.1/4	44.5	x 38	80	1.5	1.5	0.13	1.5	1.5	0.13
2	x 3/4	57	x 25	80	1.5	1.5	0.13	1.5	1.5	0.13
2	x 1	57	x 30	80	1.5	1.5	0.14	1.5	1.5	0.14
2	x 1.1/4	57	x 38	80	1.5	1.5	0.15	1.5	1.5	0.15
2	x 1.1/2	57	x 44.5	80	1.5	1.5	0.16	1.5	1.5	0.16
2.1/2	x 1	76.1	x 30	90	2	1.5	0.24	2	1.5	0.24
2.1/2	x 1.1/4	76.1	x 38	90	2	1.5	0.25	2	1.5	0.25
2.1/2	x 1.1/2	76.1	x 44.5	90	2	1.5	0.26	2	1.5	0.26
2.1/2	x 2	76.1	x 57	90	2	1.5	0.29	2	1.5	0.29
3	x 1.1/4	88.9	x 38	90	2	1.5	0.29	2.5	1.5	0.33
3	x 1.1/2	88.9	x 44.5	90	2	1.5	0.3	2.5	1.5	0.35
3	x 2	88.9	x 57	90	2	1.5	0.32	2.5	1.5	0.38
3	x 2.1/2	88.9	x 76.1	90	2	2	0.4	2.5	2	0.48
4	x 1.1/2	108	x 44.5	100	2.5	1.5	0.46	2.5	1.5	0.46
4	x 2	108	x 57	100	2.5	1.5	0.48	2.5	1.5	0.48
4	x 2.1/2	108	x 76.1	100	2.5	2	0.57	2.5	2.5	0.61
4	x 3	108	x 88.9	100	2.5	2	0.61	2.5	2.5	0.61



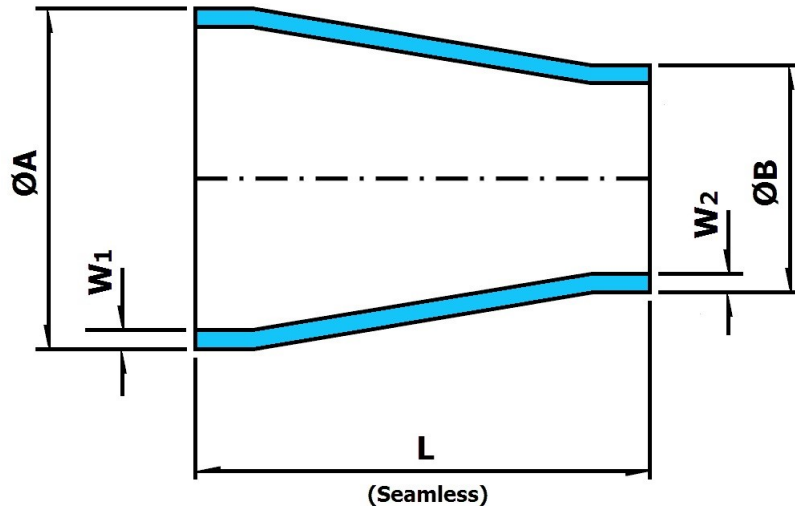
Marine Engineering Pipeworks Ltd.

Leechmere Industrial Estate, Grangetown, Sunderland, SR2 9TE, United Kingdom
 Tel: +44 191 521 1941 - Fax: +44 191 523 6954 - E-mail: Info@Mepsun.com - Web: www.Mepsun.com

Butt Weld Concentric Reducer

90/10 Copper Nickel

DIN 86089



Nominal Size (Inch) (Inch)	ØA (mm)	ØB (mm)	L (mm)	10 Bar			14 Bar		
				W1 (mm)	W2 (mm)	Weight (Kg)	W1 (mm)	W2 (mm)	Weight (Kg)
Seamless									
5 x 2	133 x 57	140	2.5	1.5	0.9	3	1.5	0.86	
5 x 2.1/2	133 x 76.1	140	2.5	2	0.93	3	2	1.06	
5 x 3	133 x 88.9	140	2.5	2	0.98	3	2.5	1.13	
5 x 4	133 x 108	140	2.5	2.5	1.16	3	2.5	1.34	
6 x 2.1/2	159 x 76.1	150	2.5	2	1.13	3	2	1.35	
6 x 3	159 x 88.9	150	2.5	2	1.19	3	2.5	1.42	
6 x 4	159 x 108	150	2.5	2.5	1.38	3	2.5	1.65	
6 x 5	159 x 133	150	2.5	2.5	1.51	3	2.5	1.81	
7 x 3	193.7 x 88.9	155	2.5	2	1.39	3.5	2.5	1.94	
7 x 4	193.7 x 108	155	2.5	2.5	1.58	3.5	2.5	2.21	
7 x 5	193.7 x 133	155	2.5	2.5	1.71	3.5	3	2.39	
7 x 6	193.7 x 159	155	2.5	2.5	1.86	3.5	3	2.6	
8 x 4	219.1 x 108	155	3	2.5	2.47	3.5	2.5	2.88	
8 x 5	219.1 x 133	155	3	2.5	2.6	3.5	3	3.03	
8 x 6	219.1 x 159	155	3	2.5	2.74	3.5	3	3.2	
8 x 7	219.1 x 193.7	155	3	2.5	2.93	3.5	3.5	3.42	
10 x 5	267 x 133	210	3	2.5	3.3	4	3	4.4	
10 x 6	267 x 159	210	3	2.5	3.49	4	3	4.65	
10 x 7	267 x 193.7	210	3	2.5	3.75	4	3.5	5	
10 x 8	267 x 219.1	210	3	3	4.25	4	3.5	5.65	
12 x 5	323.9 x 133	210	4	2.5	5.3	5	3	6.62	
12 x 6	323.9 x 159	210	4	2.5	5.3	5	3	7	
12 x 7	323.9 x 193.7	210	4	2.5	6.02	5	3.5	7.52	
12 x 8	323.9 x 219.1	210	4	3	6.3	5	3	7.9	
12 x 10	323.9 x 267	210	4	3	6.88	5	4	8.6	



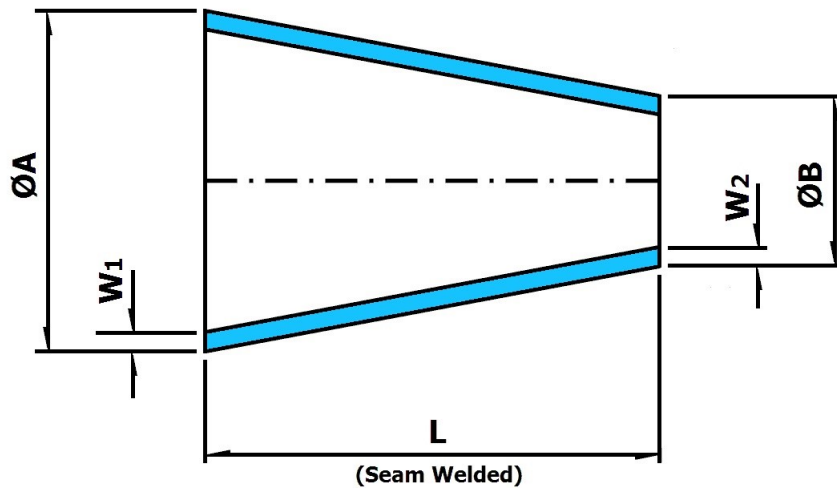
Marine Engineering Pipeworks Ltd.

Leechmere Industrial Estate, Grangetown, Sunderland, SR2 9TE, United Kingdom
 Tel: +44 191 521 1941 - Fax: +44 191 523 6954 - E-mail: Info@Mepsun.com - Web: www.Mepsun.com

Butt Weld Concentric Reducer

90/10 Copper Nickel

DIN 86089



Nominal Size (Inch) (Inch)	ØA (mm)	ØB (mm)	L (mm)	10 Bar			14 Bar		
				W1 (mm)	W2 (mm)	Weight (Kg)	W1 (mm)	W2 (mm)	Weight (Kg)
Seamless or Seam Welded									
14 x 6	368 x 159	300	4	2.5	8.75	5.5	3	12.03	
14 x 7	368 x 193.7	300	4	2.5	9.34	5.5	3	12.84	
14 x 8	368 x 219.1	300	4	3	9.76	5.5	3.5	13.42	
14 x 10	368 x 267	300	4	3	10.57	5.5	4	14.53	
14 x 12	368 x 323.9	300	4	4	11.53	5.5	5	15.85	
16 x 7	419.1 x 193.7	325	4	2.5	11.04	6	3.5	16.56	
16 x 8	419.1 x 219.1	325	4	3	11.5	6	3.5	17.25	
16 x 10	419.1 x 267	325	4	3	12.38	6	4	18.57	
16 x 12	419.1 x 323.9	325	4	4	13.42	6	5	20.13	
16 x 14	419.1 x 368	325	4	4	14.22	6	5.5	21.33	
18 x 8	457.2 x 219.1	350	4	3	13.14	6	3.5	19.7	
18 x 10	457.2 x 267	350	4	3	14.08	6	4	21.1	
18 x 12	457.2 x 323.9	350	4	4	15.2	6	5	22.8	
18 x 14	457.2 x 368	350	4	4	16.06	6	5.5	24.1	
18 x 16	457.2 x 419.1	350	4	4	17.7	6	6	25.8	
20 x 10	508 x 267	375	4.5	3	18.07	6.5	4	26.1	
20 x 12	508 x 323.9	375	4.5	4	19.42	6.5	5	28.05	
20 x 14	508 x 368	375	4.5	4	20.47	6.5	5.5	29.6	
20 x 16	508 x 419.1	375	4.5	4	21.68	6.5	6	31.3	
20 x 18	508 x 457.2	375	4.5	4	22.57	6.5	6	32.6	
24 x 14	610 x 368	400	5	4	27.19	8	5.5	43.5	
24 x 16	610 x 419.1	400	5	4	28.62	8	6	45.8	
24 x 18	610 x 457.2	400	5	4	29.69	8	6	47.5	
24 x 20	610 x 508	400	5	4.5	31.12	8	6.5	49.8	



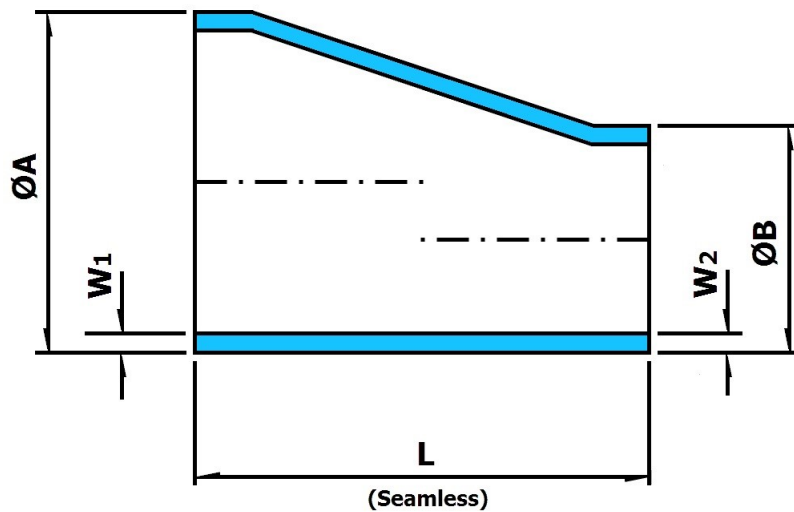
Marine Engineering Pipeworks Ltd.

Leechmere Industrial Estate, Grangetown, Sunderland, SR2 9TE, United Kingdom
 Tel: +44 191 521 1941 - Fax: +44 191 523 6954 - E-mail: Info@Mepsun.com - Web: www.Mepsun.com

Butt Weld Eccentric Reducer

90/10 Copper Nickel

DIN 86089



Nominal Size (Inch) (Inch)	ØA (mm)	ØB (mm)	L (mm)	10 Bar			14 Bar		
				W1 (mm)	W2 (mm)	Weight (Kg)	W1 (mm)	W2 (mm)	Weight (Kg)
Seamless									
3/4 x 1/2	25 x 20	30	30	1.5	1	0.03	1.5	1	0.03
1 x 1/2	30 x 20	35	35	1.5	1	0.04	1.5	1	0.04
1 x 3/4	30 x 25	35	35	1.5	1.5	0.05	1.5	1.5	0.05
1.1/4 x 1/2	38 x 20	50	50	1.5	1	0.06	1.5	1	0.06
1.1/4 x 3/4	38 x 25	50	50	1.5	1.5	0.07	1.5	1.5	0.07
1.1/4 x 1	38 x 30	50	50	1.5	1.5	0.08	1.5	1.5	0.08
1.1/2 x 1/2	44.5 x 20	80	80	1.5	1	0.09	1.5	1	0.09
1.1/2 x 3/4	44.5 x 25	80	80	1.5	1.5	0.11	1.5	1.5	0.11
1.1/2 x 1	44.5 x 30	80	80	1.5	1.5	0.12	1.5	1.5	0.12
1.1/2 x 1.1/4	44.5 x 38	80	80	1.5	1.5	0.13	1.5	1.5	0.13
2 x 3/4	57 x 25	80	80	1.5	1.5	0.13	1.5	1.5	0.13
2 x 1	57 x 30	80	80	1.5	1.5	0.14	1.5	1.5	0.14
2 x 1.1/4	57 x 38	80	80	1.5	1.5	0.15	1.5	1.5	0.15
2 x 1.1/2	57 x 44.5	80	80	1.5	1.5	0.16	1.5	1.5	0.16
2.1/2 x 1	76.1 x 30	90	90	2	1.5	0.24	2	1.5	0.24
2.1/2 x 1.1/4	76.1 x 38	90	90	2	1.5	0.25	2	1.5	0.25
2.1/2 x 1.1/2	76.1 x 44.5	90	90	2	1.5	0.26	2	1.5	0.26
2.1/2 x 2	76.1 x 57	90	90	2	1.5	0.29	2	1.5	0.29
3 x 1.1/4	88.9 x 38	90	90	2	1.5	0.29	2.5	1.5	0.33
3 x 1.1/2	88.9 x 44.5	90	90	2	1.5	0.3	2.5	1.5	0.35
3 x 2	88.9 x 57	90	90	2	1.5	0.32	2.5	1.5	0.38
3 x 2.1/2	88.9 x 76.1	90	90	2	2	0.4	2.5	2	0.48
4 x 1.1/2	108 x 44.5	100	100	2.5	1.5	0.46	2.5	1.5	0.46
4 x 2	108 x 57	100	100	2.5	1.5	0.48	2.5	1.5	0.48
4 x 2.1/2	108 x 76.1	100	100	2.5	2	0.57	2.5	2.5	0.61
4 x 3	108 x 88.9	100	100	2.5	2	0.61	2.5	2.5	0.61



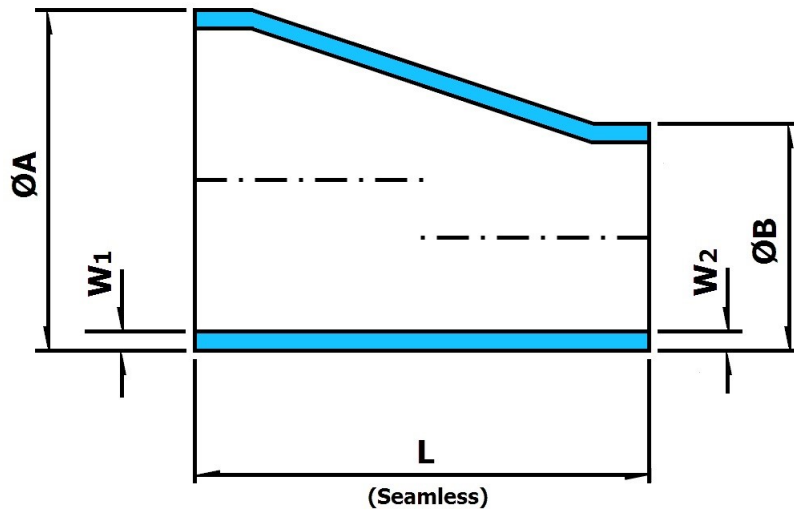
Marine Engineering Pipeworks Ltd.

Leechmere Industrial Estate, Grangetown, Sunderland, SR2 9TE, United Kingdom
 Tel: +44 191 521 1941 - Fax: +44 191 523 6954 - E-mail: Info@Mepsun.com - Web: www.Mepsun.com

Butt Weld Eccentric Reducer

90/10 Copper Nickel

DIN 86089



Nominal Size (Inch)	Nominal Size (Inch)	ØA (mm)	ØB (mm)	L (mm)	10 Bar			14 Bar		
					W1 (mm)	W2 (mm)	Weight (Kg)	W1 (mm)	W2 (mm)	Weight (Kg)
Seamless										
5	x 2	133	x 57	140	2.5	1.5	0.9	3	1.5	0.86
5	x 2.1/2	133	x 76.1	140	2.5	2	0.93	3	2	1.06
5	x 3	133	x 88.9	140	2.5	2	0.98	3	2.5	1.13
5	x 4	133	x 108	140	2.5	2.5	1.16	3	2.5	1.34
6	x 2.1/2	159	x 76.1	150	2.5	2	1.13	3	2	1.35
6	x 3	159	x 88.9	150	2.5	2	1.19	3	2.5	1.42
6	x 4	159	x 108	150	2.5	2.5	1.38	3	2.5	1.65
6	x 5	159	x 133	150	2.5	2.5	1.51	3	2.5	1.81
7	x 3	193.7	x 88.9	155	2.5	2	1.39	3.5	2.5	1.94
7	x 4	193.7	x 108	155	2.5	2.5	1.58	3.5	2.5	2.21
7	x 5	193.7	x 133	155	2.5	2.5	1.71	3.5	3	2.39
7	x 6	193.7	x 159	155	2.5	2.5	1.86	3.5	3	2.6
8	x 4	219.1	x 108	155	3	2.5	2.47	3.5	2.5	2.88
8	x 5	219.1	x 133	155	3	2.5	2.6	3.5	3	3.03
8	x 6	219.1	x 159	155	3	2.5	2.74	3.5	3	3.2
8	x 7	219.1	x 193.7	155	3	2.5	2.93	3.5	3.5	3.42
10	x 5	267	x 133	210	3	2.5	3.3	4	3	4.4
10	x 6	267	x 159	210	3	2.5	3.49	4	3	4.65
10	x 7	267	x 193.7	210	3	2.5	3.75	4	3.5	5
10	x 8	267	x 219.1	210	3	3	4.25	4	3.5	5.65
12	x 5	323.9	x 133	210	4	2.5	5.3	5	3	6.62
12	x 6	323.9	x 159	210	4	2.5	5.3	5	3	7
12	x 7	323.9	x 193.7	210	4	2.5	6.02	5	3.5	7.52
12	x 8	323.9	x 219.1	210	4	3	6.3	5	3	7.9
12	x 10	323.9	x 267	210	4	3	6.88	5	4	8.6



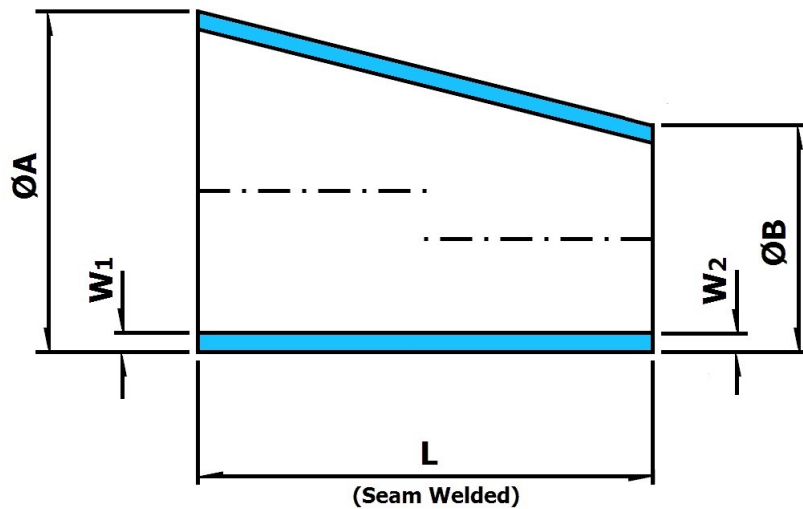
Marine Engineering Pipeworks Ltd.

Leechmere Industrial Estate, Grangetown, Sunderland, SR2 9TE, United Kingdom
 Tel: +44 191 521 1941 - Fax: +44 191 523 6954 - E-mail: Info@Mepsun.com - Web: www.Mepsun.com

Butt Weld Eccentric Reducer

90/10 Copper Nickel

DIN 86089



				10 Bar			14 Bar			
Nominal Size		ØA	ØB	L	W1	W2	Weight	W1	W2	Weight
(Inch)	(Inch)	(mm)	(mm)	(mm)	(mm)	(mm)	(Kg)	(mm)	(mm)	(Kg)
Seamless or Seam Welded										
14	x 6	368	x 159	300	4	2.5	8.75	5.5	3	12.03
14	x 7	368	x 193.7	300	4	2.5	9.34	5.5	3	12.84
14	x 8	368	x 219.1	300	4	3	9.76	5.5	3.5	13.42
14	x 10	368	x 267	300	4	3	10.57	5.5	4	14.53
14	x 12	368	x 323.9	300	4	4	11.53	5.5	5	15.85
16	x 7	419.1	x 193.7	325	4	2.5	11.04	6	3.5	16.56
16	x 8	419.1	x 219.1	325	4	3	11.5	6	3.5	17.25
16	x 10	419.1	x 267	325	4	3	12.38	6	4	18.57
16	x 12	419.1	x 323.9	325	4	4	13.42	6	5	20.13
16	x 14	419.1	x 368	325	4	4	14.22	6	5.5	21.33
18	x 8	457.2	x 219.1	350	4	3	13.14	6	3.5	19.7
18	x 10	457.2	x 267	350	4	3	14.08	6	4	21.1
18	x 12	457.2	x 323.9	350	4	4	15.2	6	5	22.8
18	x 14	457.2	x 368	350	4	4	16.06	6	5.5	24.1
18	x 16	457.2	x 419.1	350	4	4	17.7	6	6	25.8
20	x 10	508	x 267	375	4.5	3	18.07	6.5	4	26.1
20	x 12	508	x 323.9	375	4.5	4	19.42	6.5	5	28.05
20	x 14	508	x 368	375	4.5	4	20.47	6.5	5.5	29.6
20	x 16	508	x 419.1	375	4.5	4	21.68	6.5	6	31.3
20	x 18	508	x 457.2	375	4.5	4	22.57	6.5	6	32.6
24	x 14	610	x 368	400	5	4	27.19	8	5.5	43.5
24	x 16	610	x 419.1	400	5	4	28.62	8	6	45.8
24	x 18	610	x 457.2	400	5	4	29.69	8	6	47.5
24	x 20	610	x 508	400	5	4.5	31.12	8	6.5	49.8



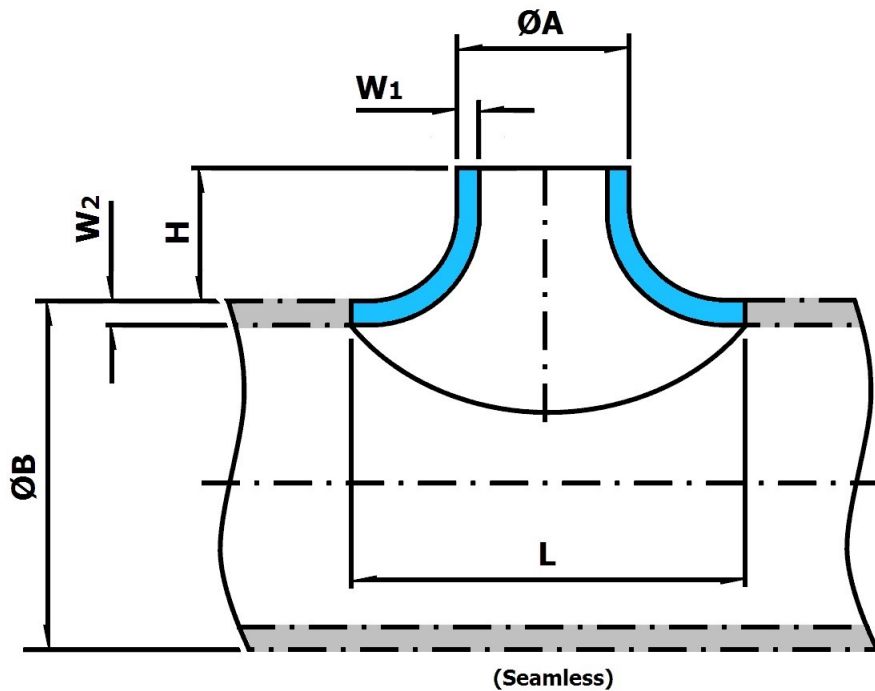
Marine Engineering Pipeworks Ltd.

Leechmere Industrial Estate, Grangetown, Sunderland, SR2 9TE, United Kingdom
 Tel: +44 191 521 1941 - Fax: +44 191 523 6954 - E-mail: Info@Mepsun.com - Web: www.Mepsun.com

Butt Weld Equal Saddles

90/10 Copper Nickel

DIN 86087



Nominal Size Inch Inch	ØA mm	ØB mm	H mm	L mm	10 Bar			14 Bar		
					W1 mm	W2 mm	Weight Kg	W1 mm	W2 mm	Weight Kg
Seamless										
1/2 x 1/2	20	x 20	20	32	1	1	0.05	1	1	0.05
3/4 x 3/4	25	x 25	22	40	1.5	1.5	0.06	1.5	1.5	0.06
1 x 1	30	x 30	30	50	1.5	1.5	0.1	1.5	1.5	0.1
1.1/4 x 1.1/4	38	x 38	35	64	1.5	1.5	0.11	1.5	1.5	0.11
1.1/2 x 1.1/2	44.5	x 44.5	35	74	1.5	1.5	0.15	1.5	1.5	0.15
2 x 2	57	x 57	40	97	1.5	1.5	0.25	1.5	1.5	0.25
2.1/2 x 2.1/2	76.1	x 76.1	50	126	2	2	0.52	2	2	0.52
3 x 3	88.9	x 88.9	55	149	2	2	0.76	2.5	2.5	0.95
4 x 4	108	x 108	75	188	2.5	2.5	1.3	2.5	2.5	1.3
5 x 5	133	x 133	85	233	2.5	2.5	1.9	3	3	2.1
6 x 6	159	x 159	95	279	2.5	2.5	2.6	3	3	3.12
7 x 7	193.7	x 193.7	110	334	2.5	2.5	3.2	3.5	3.5	4.48
8 x 8	219.1	x 219.1	125	379	3	3	5.7	3.5	3.5	6.65
10 x 10	267	x 267	155	447	3	3	8.7	4	4	11.6
12 x 12	323.9	x 323.9	185	560	4	4	13	5	5	16.25
Seamless or Seam Welded										
14 x 14	368	x 368	200	613	4	4	12.35	5.5	5.5	17
16 x 16	419.1	x 419.1	225	680	4	4	17.35	6	6	26
18 x 18	457.2	x 457.2	250	800	4	4	21.7	6	6	32.6
20 x 20	508	x 508	275	880	4.5	4.5	28.8	6.5	6.5	41.6
24 x 24	610	x 610	300	1020	5	5	47.2	8	8	75.5



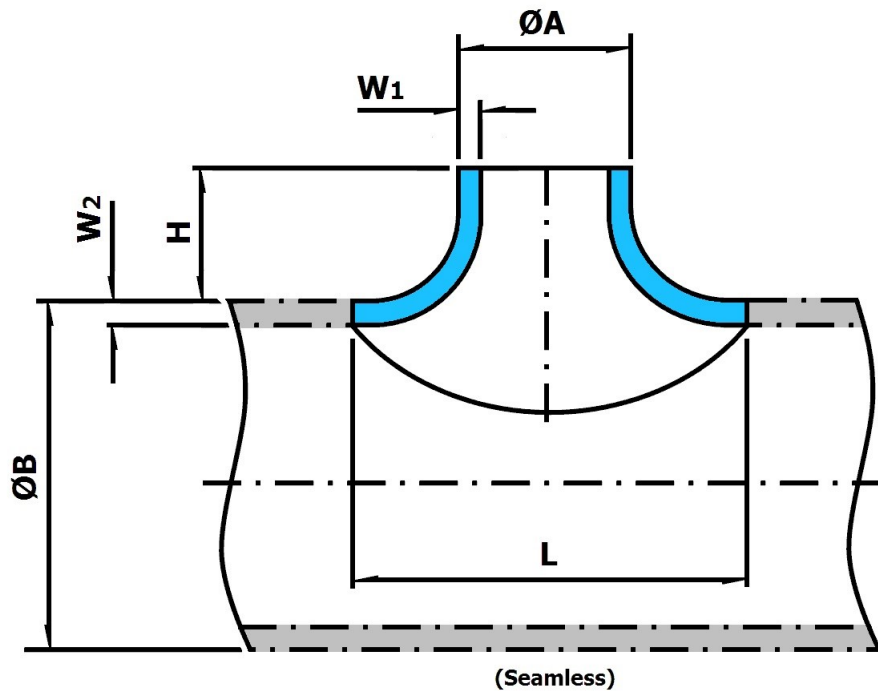
Marine Engineering Pipeworks Ltd.

Leechmere Industrial Estate, Grangetown, Sunderland, SR2 9TE, United Kingdom
 Tel: +44 191 521 1941 - Fax: +44 191 523 6954 - E-mail: Info@Mepsun.com - Web: www.Mepsun.com

Butt Weld Reducing Saddles

90/10 Copper Nickel

DIN 86087



Nominal Size		ØA	ØB	H	L	10 Bar			14 Bar		
						W1	W2	Weight	W1	W2	Weight
Inch	Inch	mm	mm	mm	mm	mm	Kg	mm	mm	Kg	
Seamless											
3/4	x 1/2	25	x 20	20	40	1.5	1	0.05	1.5	1	0.05
1	x 3/4	30	x 25	22	40	1.5	1.5	0.06	1.5	1.5	0.06
1.1/4	x 1	38	x 30	30	50	1.5	1.5	0.1	1.5	1.5	0.1
1.1/2	x 1	44.5	x 30	35	64	1.5	1.5	0.14	1.5	1.5	0.14
1.1/2	x 1.1/4	44.5	x 38	35	64	1.5	1.5	0.15	1.5	1.5	0.15
2	x 1.1/4	57	x 38	35	64	1.5	1.5	0.15	1.5	1.5	0.15
2	x 1.1/2	57	x 44.5	35	74	1.5	1.5	0.17	1.5	1.5	0.17
2.1/2	x 1.1/4	76.1	x 38	35	64	2	1.5	0.3	2	1.5	0.3
2.1/2	x 1.1/2	76.1	x 44.5	35	74	2	1.5	0.34	2	1.5	0.34
2.1/2	x 2	76.1	x 57	40	97	2	1.5	0.48	2	1.5	0.48
3	x 1.1/4	88.9	x 38	35	64	2	1.5	0.36	2.5	1.5	0.45
3	x 1.1/2	88.9	x 44.5	35	74	2	1.5	0.44	2.5	1.5	0.55
3	x 2	88.9	x 57	40	97	2	1.5	0.5	2.5	1.5	0.62
3	x 2.1/2	88.9	x 76.1	50	126	2	2	0.56	2.5	2	0.7
4	x 1.1/2	108	x 44.5	35	74	2.5	1.5	0.32	2.5	1.5	0.32
4	x 2	108	x 57	40	97	2.5	1.5	0.4	2.5	1.5	0.4
4	x 2.1/2	108	x 76.1	50	126	2.5	2	0.65	2.5	2	0.65
4	x 3	108	x 88.9	55	149	2.5	2	0.79	2.5	2.5	0.79
5	x 2	133	x 57	40	97	2.5	1.5	0.4	3	1.5	0.48
5	x 2.1/2	133	x 76.1	50	126	2.5	2	0.8	3	2	0.96
5	x 3	133	x 88.9	55	149	2.5	2	1	3	2.5	1.2
5	x 4	133	x 108	75	188	2.5	2.5	1.2	3	2.5	1.44



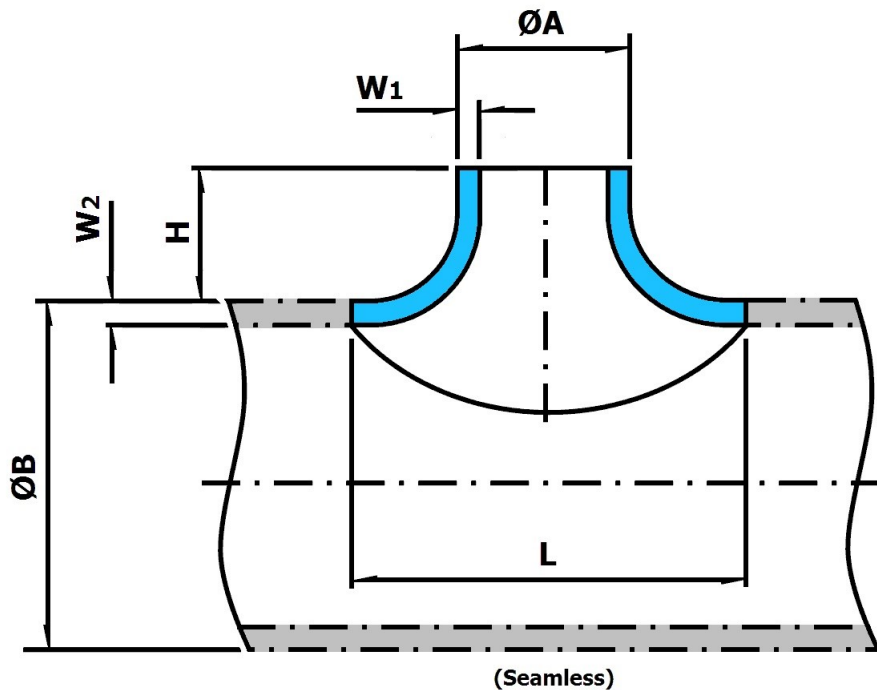
Marine Engineering Pipeworks Ltd.

Leechmere Industrial Estate, Grangetown, Sunderland, SR2 9TE, United Kingdom
 Tel: +44 191 521 1941 - Fax: +44 191 523 6954 - E-mail: Info@Mepsun.com - Web: www.Mepsun.com

Butt Weld Reducing Saddles

90/10 Copper Nickel

DIN 86087



Nominal Size Inch	Inch	ØA mm	ØB mm	H mm	L mm	10 Bar			14 Bar		
						W1 mm	W2 mm	Weight Kg	W1 mm	W2 mm	Weight Kg
Seamless											
6	x 2.1/2	159	x 76.1	50	126	2.5	2	0.65	3	2	0.78
6	x 3	159	x 88.9	55	149	2.5	2	1	3	2.5	1.2
6	x 4	159	x 108	75	188	2.5	2.5	1.2	3	2.5	1.44
6	x 5	159	x 133	85	233	2.5	2.5	2	3	3	2.4
7	x 2.1/2	193.7	x 76.1	50	126	2.5	2	0.95	3.5	2.5	1.33
7	x 3	193.7	x 88.9	55	149	2.5	2	1.3	3.5	2.5	1.82
7	x 4	193.7	x 108	75	188	2.5	2.5	1.4	3.5	2.5	1.96
7	x 5	193.7	x 133	85	233	2.5	2.5	1.9	3.5	3	2.66
7	x 6	193.7	x 159	95	279	2.5	2.5	2.5	3.5	3	3.5
8	x 3	219.1	x 88.9	55	149	3	2	1.3	3.5	2.5	1.52
8	x 4	219.1	x 108	75	188	3	2.5	1.8	3.5	2.5	2.1
8	x 5	219.1	x 133	85	233	3	2.5	2.7	3.5	3	3.15
8	x 6	219.1	x 159	95	279	3	2.5	3.8	3.5	3	4.43
8	x 7	219.1	x 193.7	110	334	3	2.5	4.5	3.5	3.5	5.25
10	x 4	267	x 108	75	188	3	2.5	1.8	4	2.5	2.4
10	x 5	267	x 133	85	233	3	2.5	2.3	4	3	3.06
10	x 6	267	x 159	95	279	3	2.5	3.7	4	3	4.93
10	x 7	267	x 193.7	110	334	3	2.5	4.7	4	3.5	6.27
10	x 8	267	x 219.1	125	379	3	3	6.1	4	3.5	8.13
12	x 5	323.9	x 133	85	233	4	2.5	2.6	5	3	3.25
12	x 6	323.9	x 159	95	279	4	2.5	3.8	5	3	4.75
12	x 7	323.9	x 193.7	110	334	4	2.5	4.9	5	3.5	6.2
12	x 8	323.9	x 219.1	125	379	4	3	7.7	5	3.5	9.6
12	x 10	323.9	x 267	155	447	4	3	10	5	4	12.5



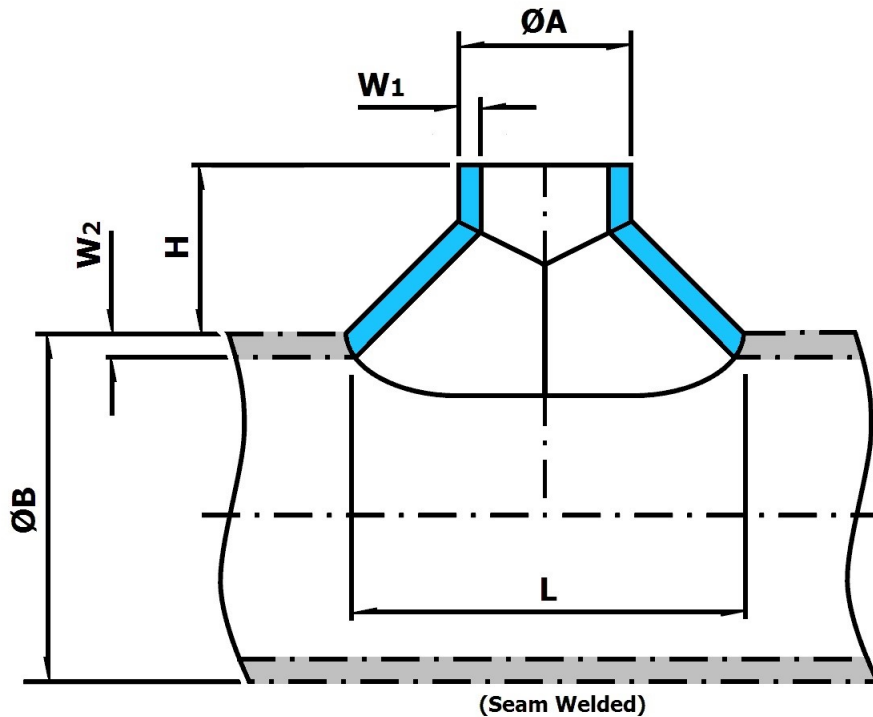
Marine Engineering Pipeworks Ltd.

Leechmere Industrial Estate, Grangetown, Sunderland, SR2 9TE, United Kingdom
Tel: +44 191 521 1941 - Fax: +44 191 523 6954 - E-mail: Info@Mepsun.com - Web: www.Mepsun.com

Butt Weld Reducing Saddles

90/10 Copper Nickel

DIN 86087



Nominal Size Inch Inch		ØA mm	ØB mm	H mm	L mm	10 Bar			14 Bar		
						W1 mm	W2 mm	Weight Kg	W1 mm	W2 mm	Weight Kg
Seamless or Seam Welded											
14	x 6	368	x 159	95	279	4	2.5	3.85	5.5	3	5.3
14	x 7	368	x 193.7	110	334	4	2.5	4.2	5.5	3.5	5.8
14	x 8	368	x 219.1	125	379	4	3	4.35	5.5	3.5	6
14	x 10	368	x 267	155	447	4	3	7.3	5.5	4	10
14	x 12	368	x 323.9	185	560	4	4	9.45	5.5	5	13
16	x 8	419.1	x 219.1	125	379	4	3	4.35	6	3.5	6.5
16	x 10	419.1	x 267	155	447	4	3	6.65	6	4	10
16	x 12	419.1	x 323.9	185	560	4	4	9.35	6	5	14
16	x 14	419.1	x 368	200	613	4	4	12	6	5.5	18
18	x 10	457.2	x 267	155	447	4	3	6.3	6	4	9.45
18	x 12	457.2	x 323.9	185	560	4	4	8	6	5	12
18	x 14	457.2	x 368	200	613	4	4	9.7	6	5.5	14.6
18	x 16	457.2	x 419.1	225	680	4	4	14.85	6	6	22.3
20	x 12	508	x 323.9	185	560	4.5	4	9	6.5	5	13
20	x 14	508	x 368	200	613	4.5	4	10.8	6.5	5.5	15.6
20	x 16	508	x 419.1	225	680	4.5	4	16.8	6.5	6	24.3
20	x 18	508	x 457.2	250	800	4.5	4	22.8	6.5	6	32.95
24	x 14	610	x 368	200	613	5	4	11.1	8	5.5	17.77
24	x 16	610	x 419.1	225	680	5	4	17.25	8	6	27.55
24	x 18	610	x 457.2	250	800	5	4	22.8	8	6	36.45
24	x 20	610	x 508	275	880	5	4.5	26.7	8	6.5	42.65



Marine Engineering Pipeworks Ltd.

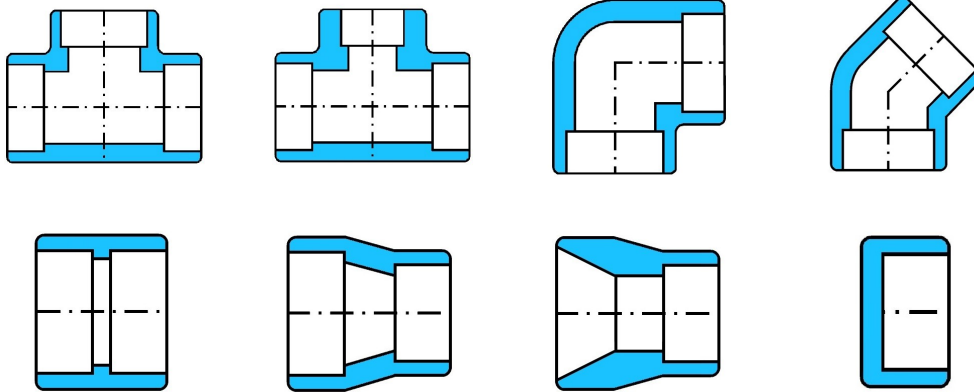
Leechmere Industrial Estate, Grangetown, Sunderland, SR2 9TE, United Kingdom
 Tel: +44 191 521 1941 - Fax: +44 191 523 6954 - E-mail: Info@Mepsun.com - Web: www.Mepsun.com

Machined Fittings

Basic Socket Weld Fittings

Pages 36 - 43

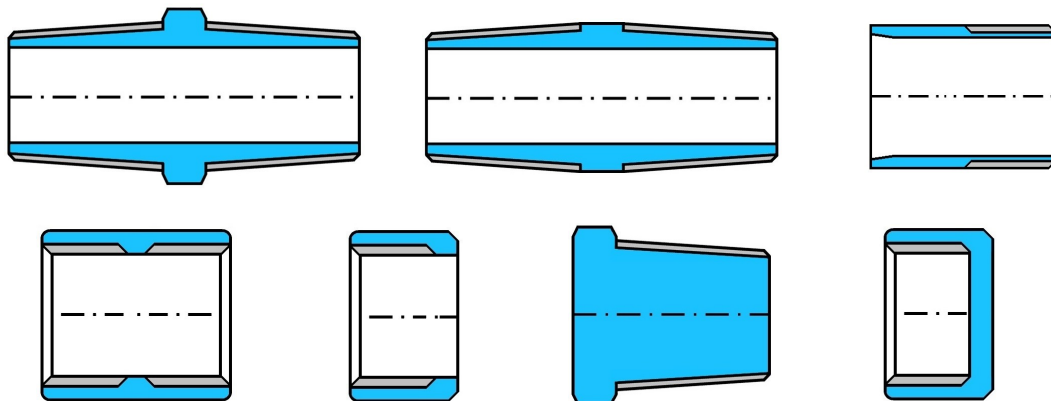
- Equal / Reducing Tee
- 90° / 45° Elbow
- Equal / Reducing Coupling
- Reducing Insert
- End Cap



Basic Threaded Fittings

Pages 46 - 51

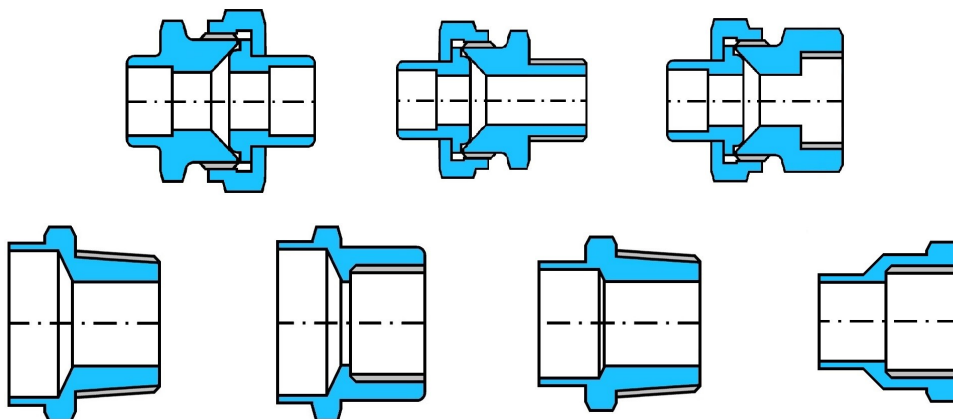
- Hex Nipple
- Pipe Nipple
- Welding End
- Coupling
- Socket
- Hex Plug
- End Cap



Unions, Connectors And Adaptors

Pages 52 - 58

- Socket Weld Union
- Male / Female Union
- Male / Female Connector
- Male / Female Adaptor



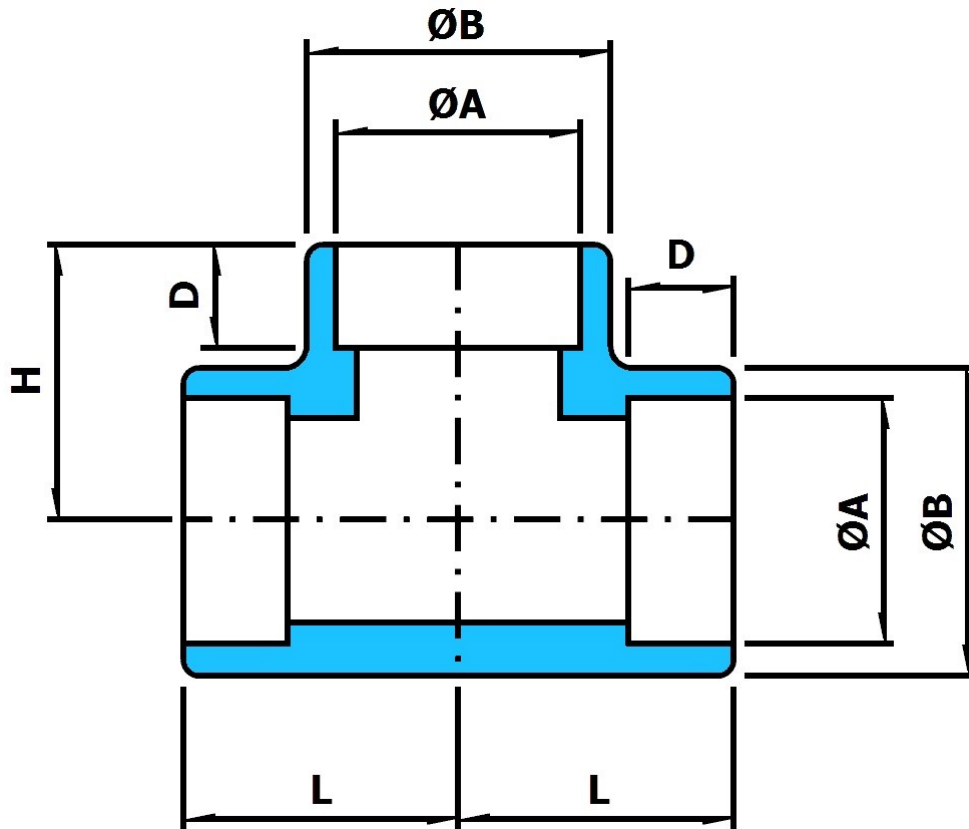
Marine Engineering Pipeworks Ltd.

Leechmere Industrial Estate, Grangetown, Sunderland, SR2 9TE, United Kingdom
Tel: +44 191 521 1941 - Fax: +44 191 523 6954 - E-mail: Info@Mepsun.com - Web: www.Mepsun.com

Socket Weld Equal Tee

90/10 Copper Nickel.

Also available as a [Capillary](#) fitting.



Nominal Size (Inch)	Actual Size (mm)	ØB (mm)	L (mm)	H (mm)	ØA (mm)	D (mm)	Weight (Kg)
1/2	20	26.05	25	25	20.1	10	0.12
3/4	25	33	29	29	25.1	13	0.31
1	30	38	34	34	30.1	13	0.37
1.1/4	38	46	38	38	38.1	13	0.65
1.1/2	44.5	56	44	44	44.6	13	1.08
2	57	63.5	50	50	57.3	16	1.43



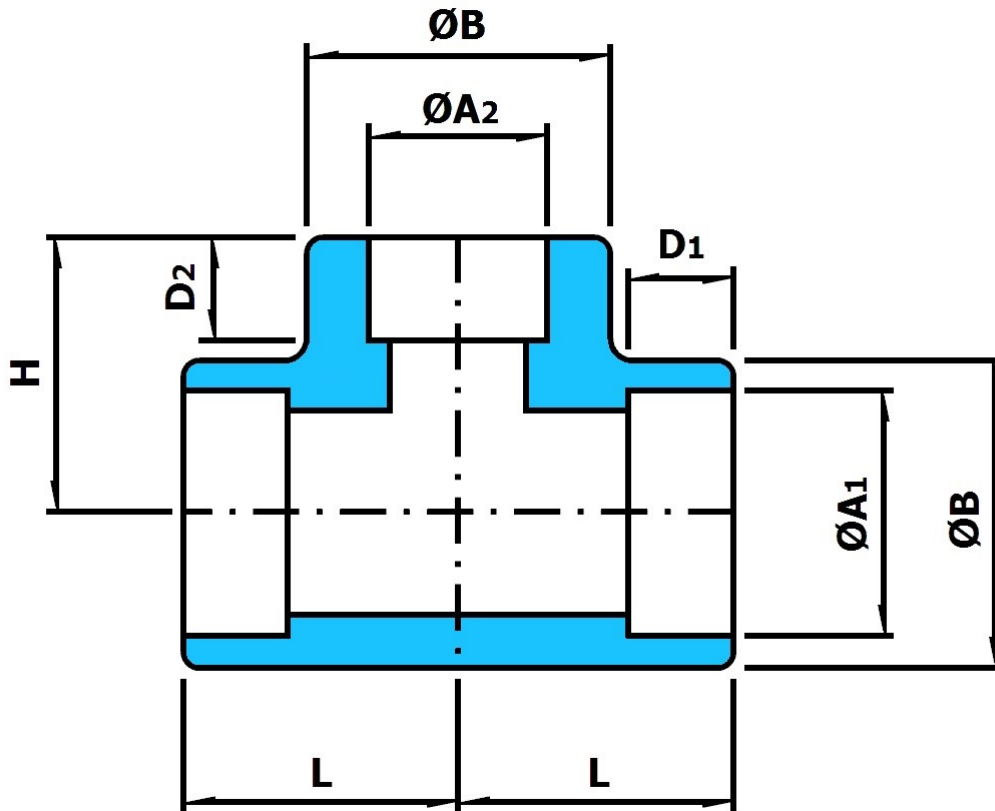
Marine Engineering Pipeworks Ltd.

Leechmere Industrial Estate, Grangetown, Sunderland, SR2 9TE, United Kingdom
 Tel: +44 191 521 1941 - Fax: +44 191 523 6954 - E-mail: Info@Mepsun.com - Web: www.Mepsun.com

Socket Weld Reducing Tee

90/10 Copper Nickel.

Also available as a [Capillary](#) fitting.



Nominal Size		Actual Size		ØB	H	ØA1	D1	ØA2	D2	Weight
(Inch)	(Inch)	(mm)	(mm)							
3/4	x 1/2	25	x 20	33	29	25.1	13	20.1	10	0.37
1	x 1/2	30	x 20	38	34	30.1	13	20.1	10	0.47
1	x 3/4	30	x 25	38	34	30.1	13	25.1	13	0.41
1.1/4	x 1/2	38	x 20	46	38	38.1	13	20.1	10	0.83
1.1/4	x 3/4	38	x 25	46	38	38.1	13	25.1	13	0.77
1.1/4	x 1	38	x 30	46	38	38.1	13	30.1	13	0.73
1.1/2	x 1/2	44.5	x 20	56	44	44.6	13	20.1	10	1.35
1.1/2	x 3/4	44.5	x 25	56	44	44.6	13	25.1	13	1.29
1.1/2	x 1	44.5	x 30	56	44	44.6	13	30.1	13	1.25
1.1/2	x 1.1/4	44.5	x 38	56	44	44.6	13	38.1	13	1.17
2	x 1/2	57	x 20	63.5	50	57.3	16	20.1	10	1.89
2	x 3/4	57	x 25	63.5	50	57.3	16	25.1	13	1.83
2	x 1	57	x 30	63.5	50	57.3	16	30.1	13	1.79
2	x 1.1/4	57	x 38	63.5	50	57.3	16	38.1	13	1.71
2	x 1.1/2	57	x 44.5	63.5	50	57.3	16	44.6	13	1.62



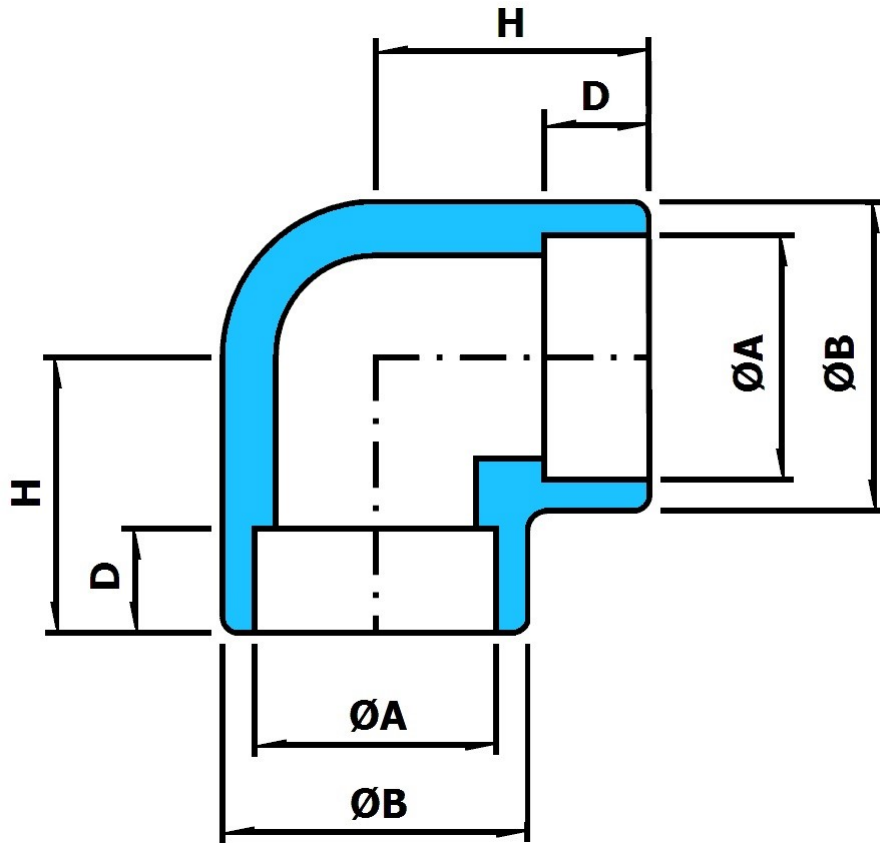
Marine Engineering Pipeworks Ltd.

Leechmere Industrial Estate, Grangetown, Sunderland, SR2 9TE, United Kingdom
 Tel: +44 191 521 1941 - Fax: +44 191 523 6954 - E-mail: Info@Mepsun.com - Web: www.Mepsun.com

Socket Weld 90° Elbow

90/10 Copper Nickel.

Also available as a [Capillary](#) fitting.



Nominal Size (Inch)	Actual Size (mm)	ØB (mm)	H (mm)	D (mm)	ØA (mm)	Weight (Kg)
1/2	20	26.05	25	10	20.1	0.1
3/4	25	33	29	13	25.1	0.26
1	30	38	34	13	30.1	0.32
1.1/4	38	46	38	13	38.1	0.59
1.1/2	44.5	56	44	13	44.6	1.01
2	57	63.5	50	16	57.3	1.31



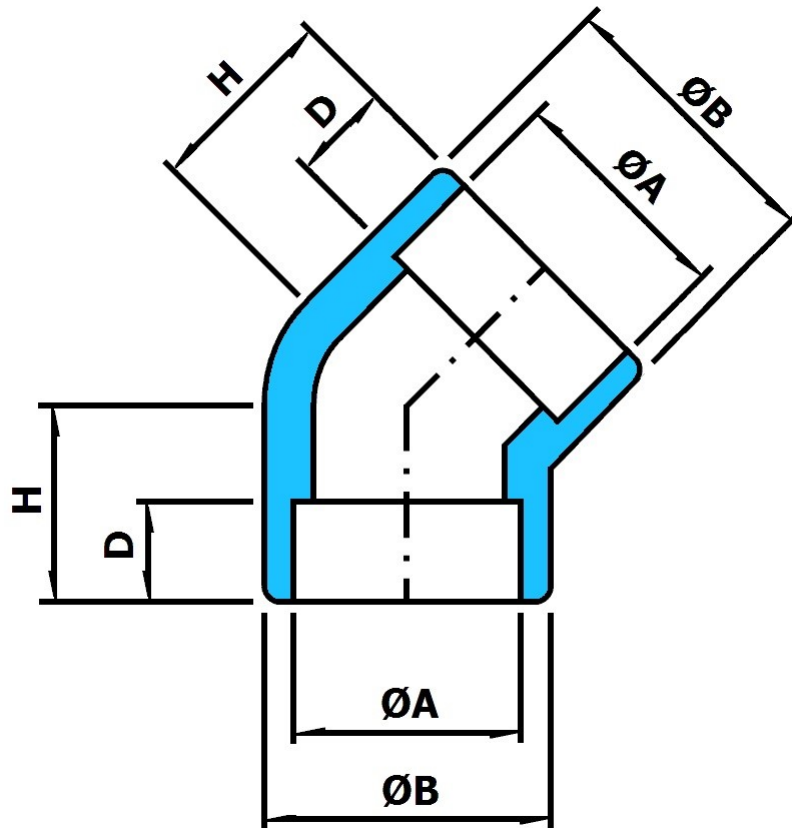
Marine Engineering Pipeworks Ltd.

Leechmere Industrial Estate, Grangetown, Sunderland, SR2 9TE, United Kingdom
 Tel: +44 191 521 1941 - Fax: +44 191 523 6954 - E-mail: Info@Mepsun.com - Web: www.Mepsun.com

Socket Weld 45° Elbow

90/10 Copper Nickel.

Also available as a [Capillary](#) fitting.



Nominal Size (Inch)	Actual Size (mm)	ØB (mm)	H (mm)	D (mm)	ØA (mm)	Weight (Kg)
1/2	20	26.05	19	10	20.1	0.1
3/4	25	33	22.5	13	25.1	0.26
1	30	38	25.5	13	30.1	0.41
1.1/4	38	46	28.5	13	38.1	0.64
1.1/2	44.5	56	33	13	44.6	0.69
2	57	63.5	36	16	57.3	1.09



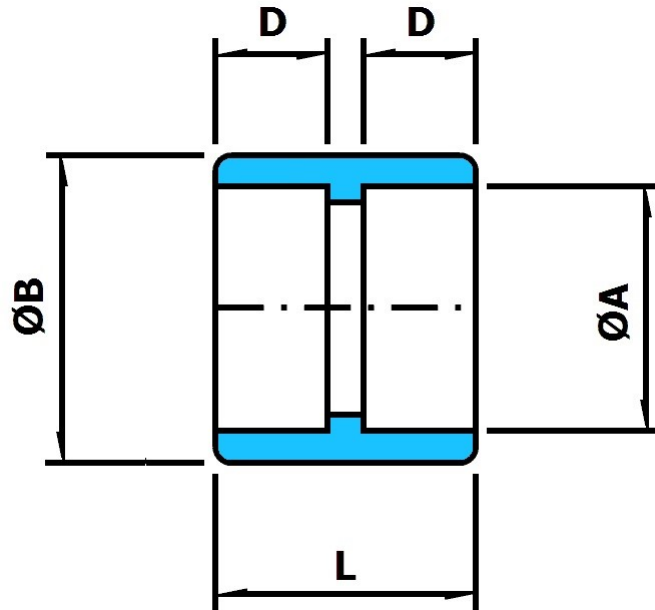
Marine Engineering Pipeworks Ltd.

Leechmere Industrial Estate, Grangetown, Sunderland, SR2 9TE, United Kingdom
 Tel: +44 191 521 1941 - Fax: +44 191 523 6954 - E-mail: Info@Mepsun.com - Web: www.Mepsun.com

Socket Weld Straight Coupling

90/10 Copper Nickel.

Also available as a [Capillary](#) fitting.



Nominal Size (Inch)	Actual Size (mm)	ØB (mm)	L (mm)	ØA (mm)	D (mm)	Weight (Kg)
1/2	20	27	23	20.1	10	0.06
3/4	25	32	30	25.1	13	0.08
1	30	37	30	30.1	13	0.1
1.1/4	38	45	30	38.1	13	0.12
1.1/2	44.5	52	31	44.6	13	0.17
2	57	64	38	57.3	16	0.22



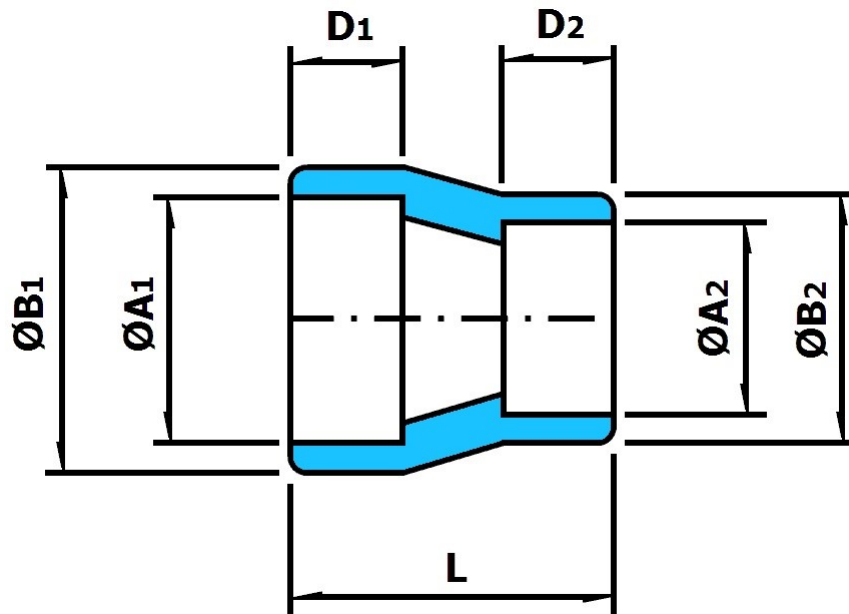
Marine Engineering Pipeworks Ltd.

Leechmere Industrial Estate, Grangetown, Sunderland, SR2 9TE, United Kingdom
 Tel: +44 191 521 1941 - Fax: +44 191 523 6954 - E-mail: Info@Mepsun.com - Web: www.Mepsun.com

Socket Weld Reducing Coupling

90/10 Copper Nickel.

Also available as a [Capillary](#) fitting.



Nominal Size		Actual Size		ØB1	ØA1	D1	ØB2	ØA2	D2	L	Weight
(Inch)	(Inch)	(mm)	(mm)	(mm)	(mm)	(mm)	(mm)	(mm)	(mm)	(mm)	(Kg)
3/4	x 1/2	25	x 20	32	25.1	13	27	20.1	10	27	0.08
1	x 1/2	30	x 20	37	30.1	13	27	20.1	10	31	0.08
1	x 3/4	30	x 25	37	30.1	13	32	25.1	13	28	0.08
1.1/4	x 1/2	38	x 20	45	38.1	13	27	20.1	10	41	0.17
1.1/4	x 3/4	38	x 25	45	38.1	13	32	25.1	13	36	0.16
1.1/4	x 1	38	x 30	45	38.1	13	37	30.1	13	33	0.15
1.1/2	x 1/2	44.5	x 20	52	44.6	13	27	20.1	10	47	0.21
1.1/2	x 3/4	44.5	x 25	52	44.6	13	32	25.1	13	42	0.22
1.1/2	x 1	44.5	x 30	52	44.6	13	37	30.1	13	39	0.23
1.1/2	x 1.1/4	44.5	x 38	52	44.6	13	45	38.1	13	36	0.24
2	x 1/2	57	x 20	64	57.3	16	27	20.1	10	58	0.27
2	x 3/4	57	x 25	64	57.3	16	32	25.1	13	54	0.26
2	x 1	57	x 30	64	57.3	16	37	30.1	13	50	0.25
2	x 1.1/4	57	x 38	64	57.3	16	45	38.1	13	47	0.24
2	x 1.1/2	57	x 44.5	64	57.3	16	52	44.6	13	41	0.23



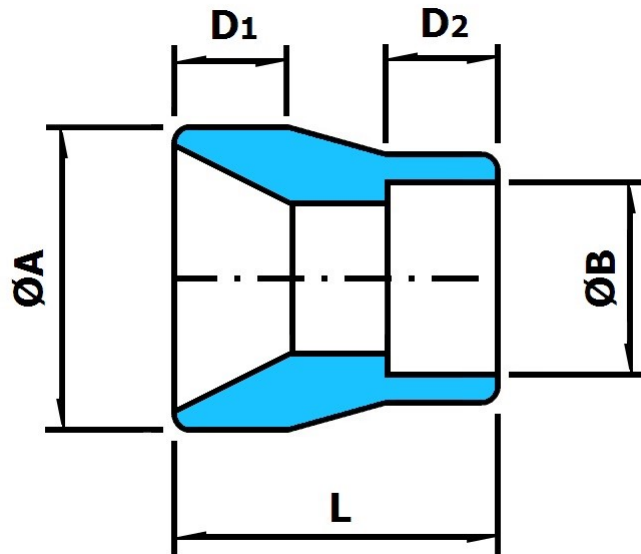
Marine Engineering Pipeworks Ltd.

Leechmere Industrial Estate, Grangetown, Sunderland, SR2 9TE, United Kingdom
 Tel: +44 191 521 1941 - Fax: +44 191 523 6954 - E-mail: Info@Mepsun.com - Web: www.Mepsun.com

Socket Weld Reducing Insert

90/10 Copper Nickel.

Also available as a [Capillary](#) fitting.



Nominal Size (Inch) (Inch)		Actual Size (mm) (mm)		ØA1 (mm)	D1 (mm)	ØA2 (mm)	ØB2 (mm)	D2 (mm)	L (mm)	Weight (Kg)
3/4	x 1/2	25	x 20	25	12	20.1	27	10	23	0.04
1	x 1/2	30	x 20	30	13	20.1	27	10	24	0.06
1	x 3/4	30	x 25	30	13	25.1	32	13	24	0.06
1.1/4	x 1/2	38	x 20	38	17	20.1	27	10	36	0.12
1.1/4	x 3/4	38	x 25	38	17	25.1	32	13	32	0.12
1.1/4	x 1	38	x 30	38	17	30.1	37	13	30	0.1
1.1/2	x 1/2	44.5	x 20	44.5	17	20.1	27	10	42	0.18
1.1/2	x 3/4	44.5	x 25	44.5	17	25.1	32	13	38	0.16
1.1/2	x 1	44.5	x 30	44.5	17	30.1	37	13	34	0.15
1.1/2	x 1.1/4	44.5	x 38	44.5	17	38.1	45	13	34	0.11
2	x 1/2	57	x 20	57	17	20.1	27	10	43	0.31
2	x 3/4	57	x 25	57	17	25.1	32	13	45	0.31
2	x 1	57	x 30	57	17	30.1	37	13	45	0.32
2	x 1.1/4	57	x 38	57	17	38.1	45	13	42	0.28
2	x 1.1/2	57	x 44.5	57	17	44.6	52	13	36	0.26



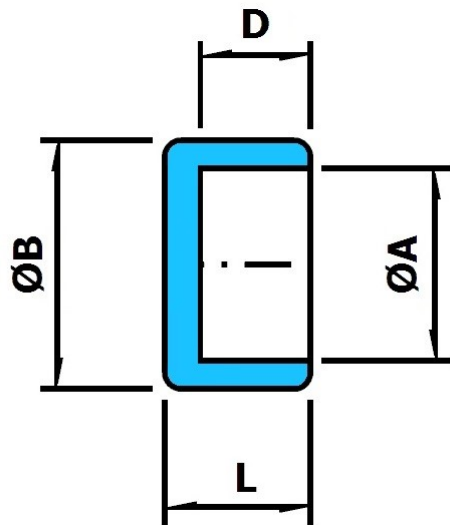
Marine Engineering Pipeworks Ltd.

Leechmere Industrial Estate, Grangetown, Sunderland, SR2 9TE, United Kingdom
 Tel: +44 191 521 1941 - Fax: +44 191 523 6954 - E-mail: Info@Mepsun.com - Web: www.Mepsun.com

Socket Weld End Cap

90/10 Copper Nickel.

Also available as a [Capillary](#) fitting.



Nominal Size (Inch)	Actual Size (mm)	ØA (mm)	ØB (mm)	L (mm)	D (mm)	Weight (Kg)
1/2	20	20.1	27	14.5	10	0.05
3/4	25	25.1	32	15	13	0.07
1	30	30.1	37	16	13	0.08
1.1/4	38	38.1	45	20	13	0.13
1.1/2	44.5	44.6	52	20.5	13	0.19
2	57	57.3	64	20.5	16	0.22



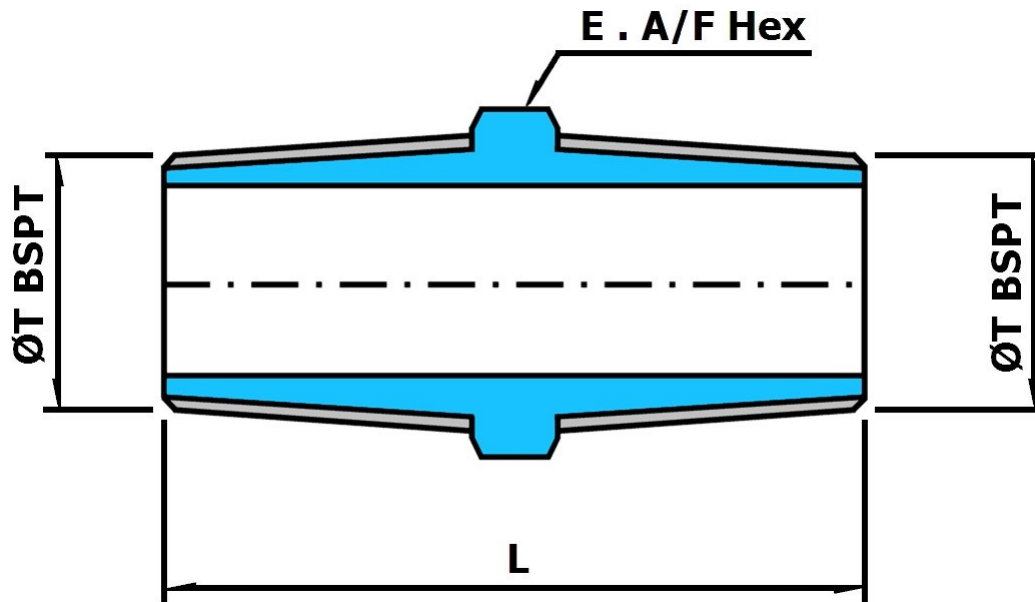
Marine Engineering Pipeworks Ltd.

Leechmere Industrial Estate, Grangetown, Sunderland, SR2 9TE, United Kingdom
 Tel: +44 191 521 1941 - Fax: +44 191 523 6954 - E-mail: Info@Mepsun.com - Web: www.Mepsun.com

BSPT Hex Nipple

90/10 Copper Nickel.

BSPP also available.



ØT BSPT (Thread, Inch)	L (mm)	E. A/F Hex (mm)	Weight (Kg)
1/4"	42	17	0.05
3/8"	47	22	0.11
1/2"	48	24	0.13
3/4	52	30	0.2
1	60	36	0.29
1.1/4	72	46	0.36
1.1/2	74	50	0.43
2	78	65	0.59



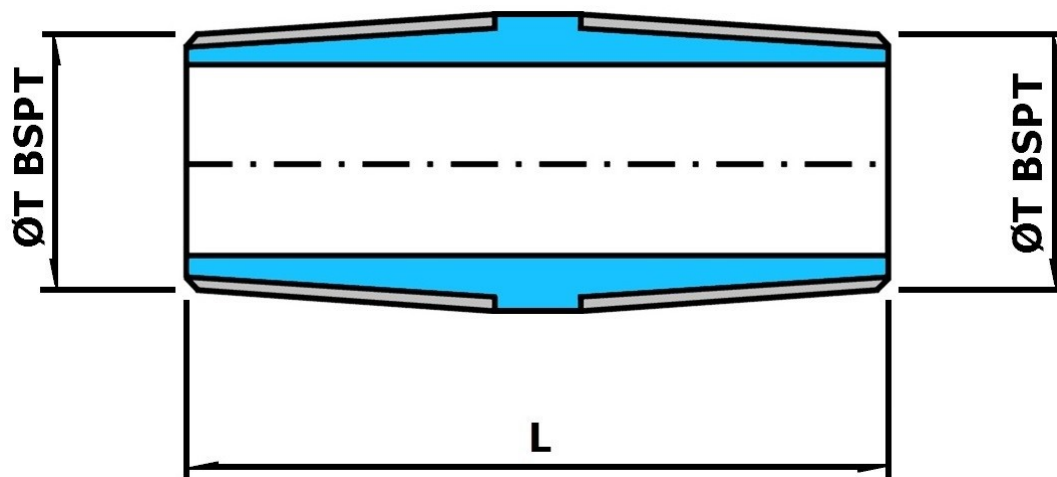
Marine Engineering Pipeworks Ltd.

Leechmere Industrial Estate, Grangetown, Sunderland, SR2 9TE, United Kingdom
 Tel: +44 191 521 1941 - Fax: +44 191 523 6954 - E-mail: Info@Mepsun.com - Web: www.Mepsun.com

BSPT Barrel Nipple

90/10 Copper Nickel.

BSPP also available.



ØT BSPT (Thread, Inch)	L (mm)	Weight (Kg)
1/4	42	0.04
3/8	47	0.1
1/2	48	0.12
3/4	52	0.19
1	60	0.28
1.1/4	72	0.35
1.1/2	74	0.42
2	78	0.58



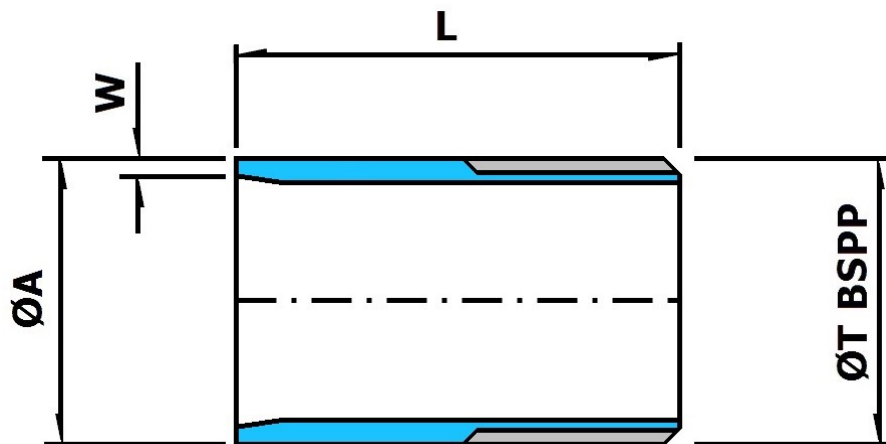
Marine Engineering Pipeworks Ltd.

Leechmere Industrial Estate, Grangetown, Sunderland, SR2 9TE, United Kingdom
 Tel: +44 191 521 1941 - Fax: +44 191 523 6954 - E-mail: Info@Mepsun.com - Web: www.Mepsun.com

BSPP Welding End

90/10 Copper Nickel.

BSPT also available.



ØT BSPP (Thread, Inch)	ØA (mm)	L (mm)	W (mm)	Weight (Kg)
1/4	10	30	1	0.02
3/8	12	30	1	0.03
1/2	20	35	1	0.06
3/4	25	40	1.5	0.09
1	30	40	1.5	0.12
1.1/4	38	50	1.5	0.19
1.1/2	44.5	50	1.5	0.28
2	57	55	1.5	0.4
2.1/2	76.1	60	2	0.7
3	88.9	65	2	0.9



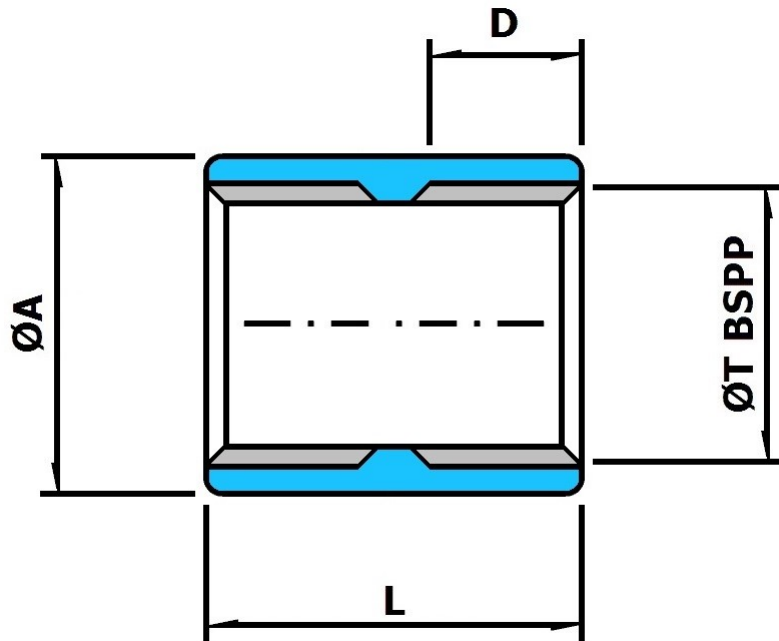
Marine Engineering Pipeworks Ltd.

Leechmere Industrial Estate, Grangetown, Sunderland, SR2 9TE, United Kingdom
 Tel: +44 191 521 1941 - Fax: +44 191 523 6954 - E-mail: Info@Mepsun.com - Web: www.Mepsun.com

BSPP Full Coupling

90/10 Copper Nickel.

BSPT also available.



ØT BSPP (Thread, Inch)	ØB (mm)	L (mm)	Weight (Kg)
1/2	29	48	0.16
3/4	35	51	0.28
1	44	60	0.38
1.1/4	57	67	0.58
1.1/2	64	79	0.78
2	76	86	1.42



Marine Engineering Pipeworks Ltd.

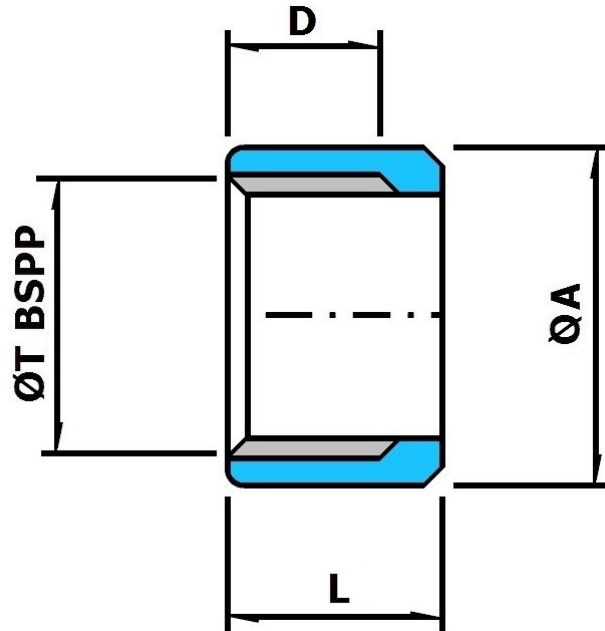
Leechmere Industrial Estate, Grangetown, Sunderland, SR2 9TE, United Kingdom
 Tel: +44 191 521 1941 - Fax: +44 191 523 6954 - E-mail: Info@Mepsun.com - Web: www.Mepsun.com

Socket (Boss)

90/10 Copper Nickel.

DIN86103/B

BSPT also available.



ØT BSPP (Thread, Inch)	ØA (mm)	D	L (mm)	Weight (Kg)
1/4	20	12	20	0.03
3/8	25	12	20	0.05
1/2	30	14	23	0.08
1/2	30	14	50	0.17
1/2	30	14	75	0.26
1/2	30	14	100	0.47
3/4	38	16	25	0.14
3/4	38	16	50	0.28
3/4	38	16	75	0.45
3/4	38	16	100	0.55
3/4	38	16	125	0.7
1	45	18	28	0.19
1	45	18	50	0.35
1	45	18	75	0.55
1	45	18	100	0.7
1	45	18	125	0.95
1.1/4	55	20	30	0.29
1.1/2	60	22	32	0.37
2	75	23	40	0.68



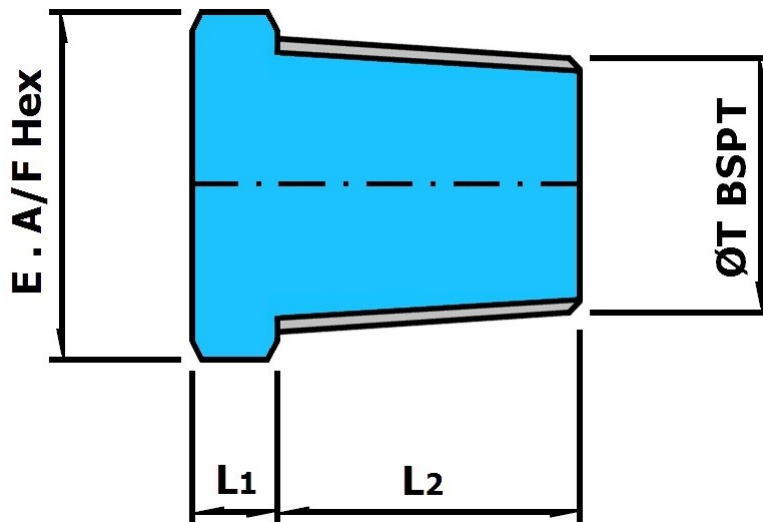
Marine Engineering Pipeworks Ltd.

Leechmere Industrial Estate, Grangetown, Sunderland, SR2 9TE, United Kingdom
 Tel: +44 191 521 1941 - Fax: +44 191 523 6954 - E-mail: Info@Mepsun.com - Web: www.Mepsun.com

BSPT Plug

90/10 Copper Nickel.

BSPP also available (with shoulder).



ØT BSPT (Thread, Inch)	L1 (mm)	L2 (min.) (mm)	E. A/F Hex (min.) (mm)	Weight (Kg)
1/2	8	20	22	0.17
3/4	10	21	27	0.3
1	10	25	35	0.55
1.1/4	14	26	45	0.95
1.1/2	16	26	51	1.1
2	17	27	64	1.85



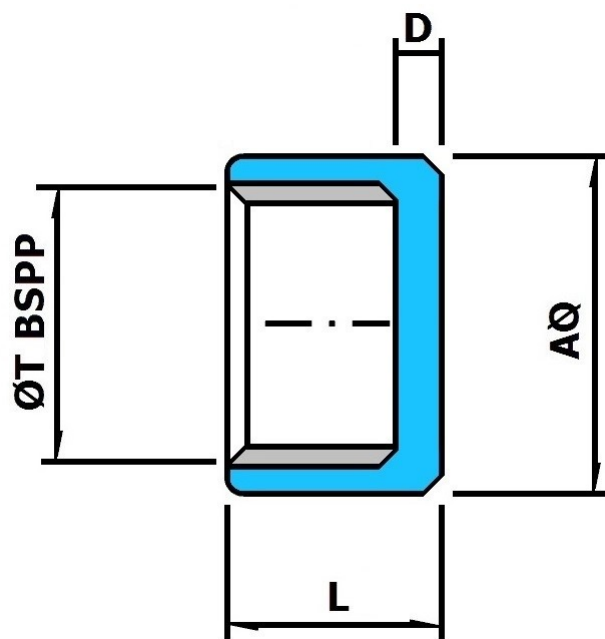
Marine Engineering Pipeworks Ltd.

Leechmere Industrial Estate, Grangetown, Sunderland, SR2 9TE, United Kingdom
 Tel: +44 191 521 1941 - Fax: +44 191 523 6954 - E-mail: Info@Mepsun.com - Web: www.Mepsun.com

BSPP End Cap

90/10 Copper Nickel.

BSPT also available.



ØT BSPP (Thread, Inch)	ØA (mm)	D (mm)	L (mm)	Weight (Kg)
1/2	29	6	32	0.17
3/4	35	6	37	0.3
1	45	10	41	0.55
1.1/4	57	10	45	0.95
1.1/2	64	11	45	1.1
2	76	13	48	1.85



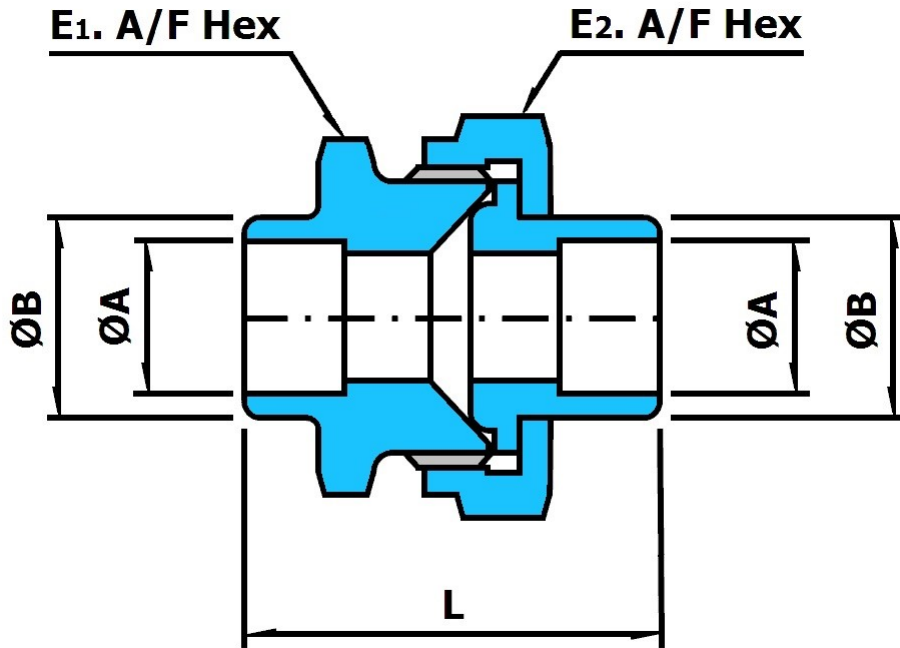
Marine Engineering Pipeworks Ltd.

Leechmere Industrial Estate, Grangetown, Sunderland, SR2 9TE, United Kingdom
 Tel: +44 191 521 1941 - Fax: +44 191 523 6954 - E-mail: Info@Mepsun.com - Web: www.Mepsun.com

Socket Weld Union

90/10 Copper Nickel.

Also available as a [Capillary](#) fitting.



*Dimension L is approximate.

Nominal Size (Inch)	Actual Size (mm)	ØB (mm)	L (mm)	ØA (mm)	E1. A/F Hex (mm)	E2. A/F Hex (mm)	Weight (Kg)
1/2	20	27	62	20.1	36	42	0.24
3/4	25	32	73	25.1	46	50	0.44
1	30	37	73	30.1	50	60	0.55
1.1/4	38	45	79	38.1	65	70	0.73
1.1/2	44.5	52	84	44.6	65	70	1.08
2	57	64	94	57.3	80	85	1.54



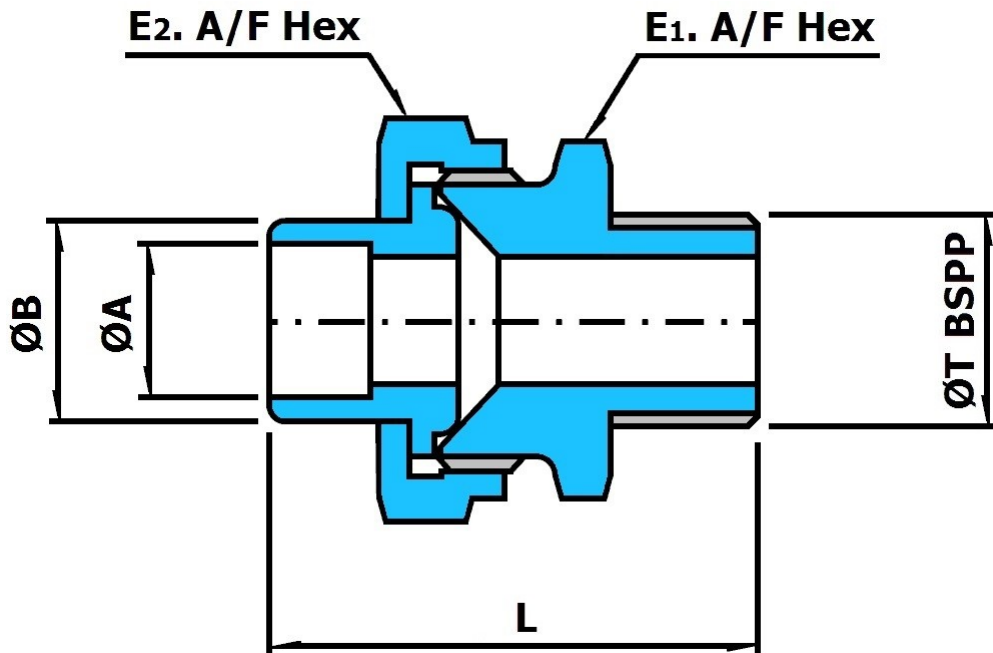
Marine Engineering Pipeworks Ltd.

Leechmere Industrial Estate, Grangetown, Sunderland, SR2 9TE, United Kingdom
 Tel: +44 191 521 1941 - Fax: +44 191 523 6954 - E-mail: Info@Mepsun.com - Web: www.Mepsun.com

Socket Weld BSPP Male Union

90/10 Copper Nickel.

Also available as a [Capillary](#) fitting and/or with [BSPT](#) thread.



*Dimension L is approximate.

Nominal Size (Inch)	Actual Size (mm)	$\varnothing T$ BSPP (Thread, Inch)	$\varnothing A$ (mm)	$\varnothing B$ (mm)	L (mm)	E1. A/F Hex (mm)	E2. A/F Hex (mm)	Weight (Kg)
1/2	20	1/2	20.1	27	79	36	42	0.47
3/4	25	3/4	25.1	32	82	46	50	0.55
1	30	1	30.1	37	89	50	60	0.73
1.1/4	38	1.1/4	38.1	45	97	65	70	1.05
1.1/2	44.5	1.1/2	44.6	52	100	65	70	1.55
2	57	2	57.3	64	109	80	85	2



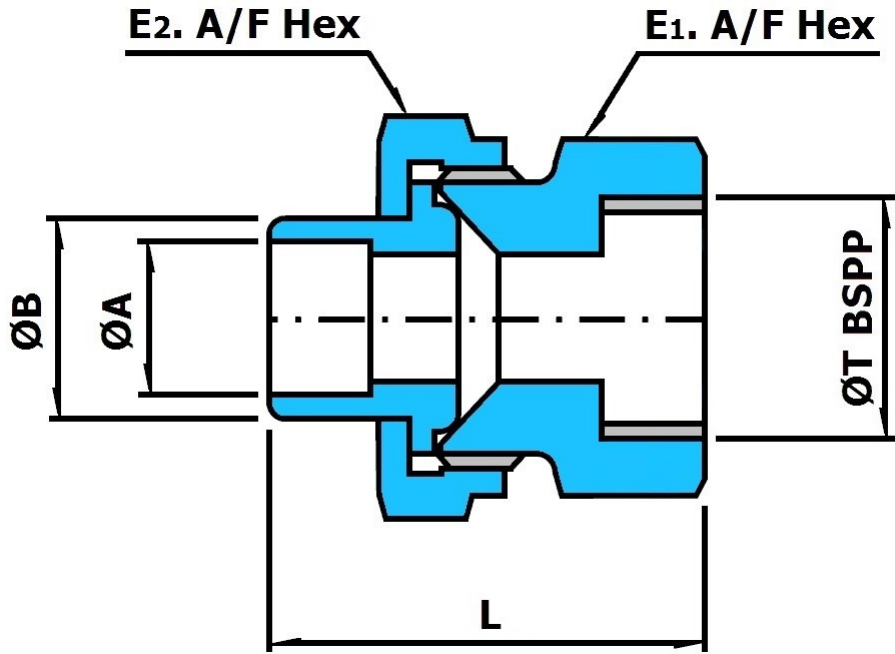
Marine Engineering Pipeworks Ltd.

Leechmere Industrial Estate, Grangetown, Sunderland, SR2 9TE, United Kingdom
 Tel: +44 191 521 1941 - Fax: +44 191 523 6954 - E-mail: Info@Mepsun.com - Web: www.Mepsun.com

Socket Weld BSPP Female Union

90/10 Copper Nickel.

Also available as a [Capillary](#) fitting and/or with [BSPT](#) thread.



*Dimension L is approximate.

Nominal Size (Inch)	Actual Size (mm)	ØT BSPP (Thread)	ØB (mm)	ØA (mm)	L (mm)	E1. A/F Hex (mm)	E2. A/F Hex (mm)	Weight (Kg)
1/2	20	1/2	27	20.1	51	27	42	0.31
3/4	25	3/4	32	25.1	56	32	50	0.43
1	30	1	37	30.1	60	41	60	0.45
1.1/4	38	1.1/4	45	38.1	68	50	70	0.72
1.1/2	44.5	1.1/2	52	44.6	70	55	70	0.85
2	57	2	64	57.3	76	70	85	1.35



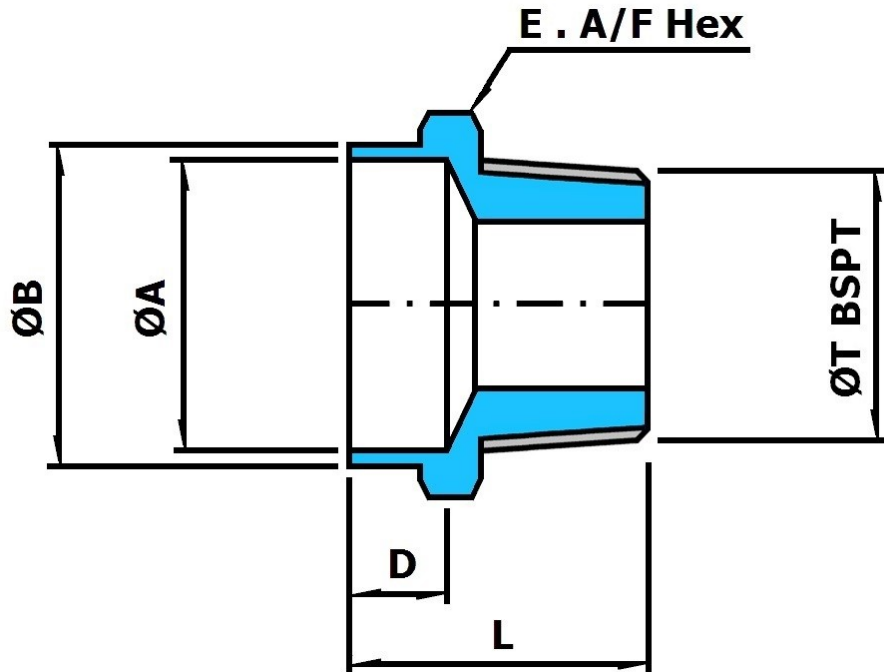
Marine Engineering Pipeworks Ltd.

Leechmere Industrial Estate, Grangetown, Sunderland, SR2 9TE, United Kingdom
 Tel: +44 191 521 1941 - Fax: +44 191 523 6954 - E-mail: Info@Mepsun.com - Web: www.Mepsun.com

Socket Weld BSPT Male Connector

90/10 Copper Nickel.

Also available as a [Capillary](#) fitting and/or with [BSPP](#) thread.



*Length and Hex Size may vary.

Actual Size (mm) (Inch)	ØA (mm)	ØT BSPT (Thread, Inch)	ØB (mm)	D (mm)	L (mm)	E. A/F Hex (mm)	Weight (Kg)
20 x 1/2	20.1	1/2	27	10	33	27	0.11
20 x 3/4	20.1	3/4	27	10	34	30	0.14
20 x 1	20.1	1	27	10	39	36	0.25
20 x 1.1/4	20.1	1.1/4	27	10	43	46	0.51
25 x 3/4	25.1	3/4	32	13	35	32	0.15
25 x 1	25.1	1	32	13	39	36	0.2
25 x 1.1/4	25.1	1.1/4	32	13	43	46	0.46
25 x 1.1/2	25.1	1.1/2	32	13	44	50	0.62
30 x 3/4	30.1	3/4	37	13	38	41	0.24
30 x 1	30.1	1	37	13	41	41	0.25
30 x 1.1/4	30.1	1.1/4	37	13	44	46	0.39
30 x 1.1/2	30.1	1.1/2	37	13	45	50	0.55
38 x 3/4	38.1	3/4	45	13	44	46	0.3
38 x 1	38.1	1	45	13	44	46	0.27
38 x 1.1/4	38.1	1.1/4	45	13	45	46	0.32
38 x 1.1/2	38.1	1.1/2	45	13	46	50	0.36
44.5 x 1	44.6	1	52	13	47	55	0.4
44.5 x 1.1/4	44.6	1.1/4	52	13	48	55	0.48
44.5 x 1.1/2	44.6	1.1/2	52	13	48	55	0.48
44.5 x 2	44.6	2	52	13	51	65	0.87
57 x 1.1/4	57.3	1.1/4	64	16	51	65	0.68
57 x 1.1/2	57.3	1.1/2	64	16	51	65	0.65
57 x 2	57.3	2	64	16	51	65	0.57
57 x 2.1/2	57.3	2.1/2	64	16	60	75	1.17



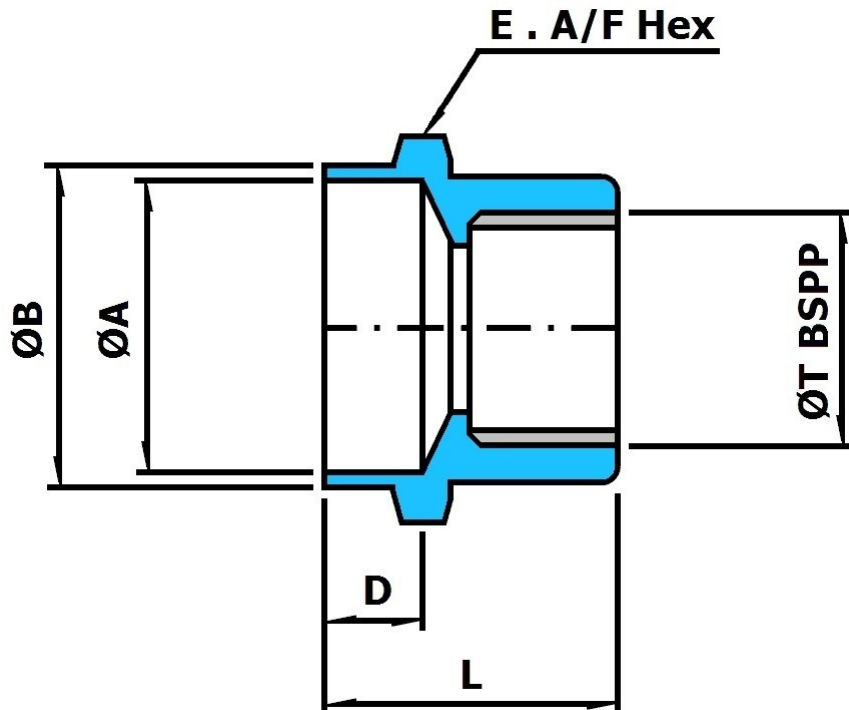
Marine Engineering Pipeworks Ltd.

Leechmere Industrial Estate, Grangetown, Sunderland, SR2 9TE, United Kingdom
 Tel: +44 191 521 1941 - Fax: +44 191 523 6954 - E-mail: Info@Mepsun.com - Web: www.Mepsun.com

Socket Weld BSPP Female Connector

90/10 Copper Nickel.

Also available as a [Capillary](#) fitting and/or with [BSPT](#) thread.



*Length and Hex Size may vary.

Actual Size (mm) (Inch)	ØA (mm)	ØT BSPP (Thread, Inch)	ØB (mm)	D (mm)	L (mm)	E. A/F Hex (mm)	Weight (Kg)
20 x 1/2	20.1	1/2	27	10	28	27	0.08
20 x 3/4	20.1	3/4	27	10	32	32	0.11
20 x 1	20.1	1	27	10	37	41	0.31
20 x 1.1/4	20.1	1.1/4	27	10	40	50	0.29
25 x 3/4	25.1	3/4	32	13	31	32	0.1
25 x 1	25.1	1	32	13	35	41	0.2
25 x 1.1/4	25.1	1.1/4	32	13	39	50	0.29
25 x 1.1/2	25.1	1.1/2	32	13	41	55	0.32
30 x 3/4	30.1	3/4	37	13	31	41	0.23
30 x 1	30.1	1	37	13	35	41	0.19
30 x 1.1/4	30.1	1.1/4	37	13	38	50	0.28
30 x 1.1/2	30.1	1.1/2	37	13	40	55	0.3
38 x 3/4	38.1	3/4	45	13	39	41	0.39
38 x 1	38.1	1	45	13	39	41	0.31
38 x 1.1/4	38.1	1.1/4	45	13	40	50	0.29
38 x 1.1/2	38.1	1.1/2	45	13	42	55	0.32
44.5 x 1	44.6	1	52	13	43	55	0.55
44.5 x 1.1/4	44.6	1.1/4	52	13	39	55	0.5
44.5 x 1.1/2	44.6	1.1/2	52	13	40	55	0.43
44.5 x 2	44.6	2	52	13	43	70	0.65
57 x 1.1/4	57.3	1.1/4	64	16	45	65	0.8
57 x 1.1/2	57.3	1.1/2	64	16	40	65	0.73
57 x 2	57.3	2	64	16	40	70	0.65
57 x 2.1/2	57.3	2.1/2	64	16	49	85	0.97



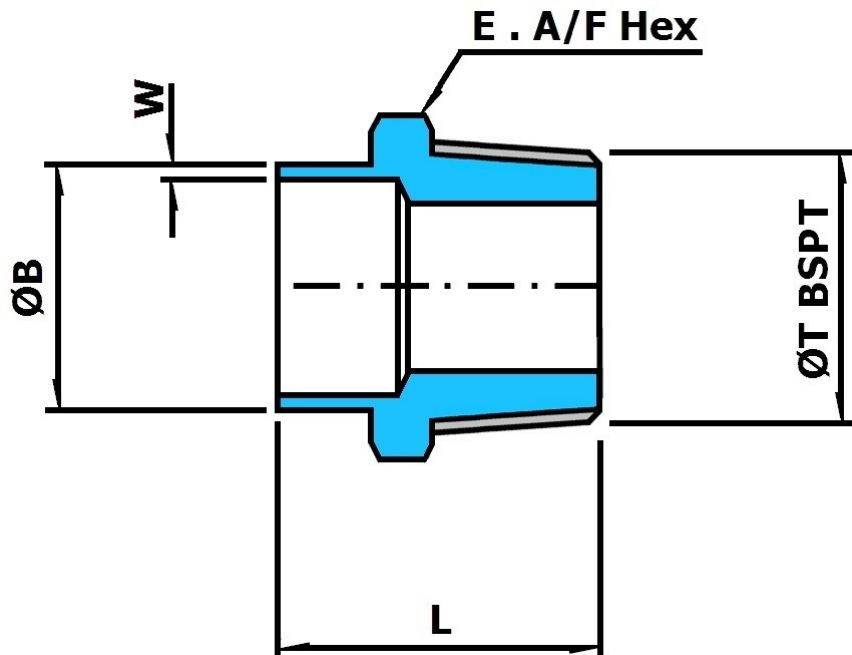
Marine Engineering Pipeworks Ltd.

Leechmere Industrial Estate, Grangetown, Sunderland, SR2 9TE, United Kingdom
 Tel: +44 191 521 1941 - Fax: +44 191 523 6954 - E-mail: Info@Mepsun.com - Web: www.Mepsun.com

BSPT Male Adaptor

90/10 Copper Nickel.

Also available as a [Capillary](#) fitting and/or with [BSPP](#) thread.



*Length and Hex Size may vary.

Nominal Size (Inch) (Inch)	Actual Size (mm x BSPP Thread)	ØB (mm)	W (mm)	ØT BSPT (Thread)	L (mm)	E. A/F Hex (mm)	Weight (Kg)
1/2 x 1/2	20mm x 1/2"	20	2	1/2"	37	27	0.1
3/4 x 3/4	25mm x 3/4"	25	2	3/4"	45	32	0.22
1 x 1	30mm x 1"	30	2.5	1"	53	38	0.32
1.1/4 x 1.1/4	38mm x 1.1/4"	38	2.5	1.1/4"	60	50	0.5
1.1/2 x 1.1/2	44.5mm x 1.1/2"	44.5	2.5	1.1/2"	60	50	0.6
2 x 2	57mm x 2"	57	2.5	2"	70	65	0.98



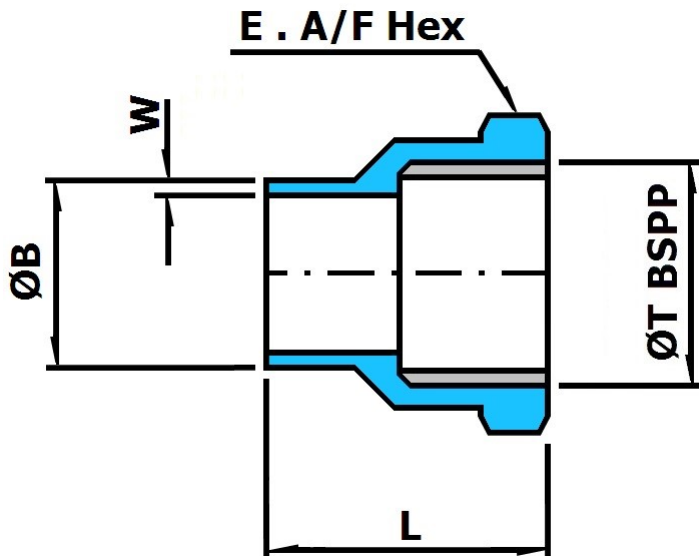
Marine Engineering Pipeworks Ltd.

Leechmere Industrial Estate, Grangetown, Sunderland, SR2 9TE, United Kingdom
 Tel: +44 191 521 1941 - Fax: +44 191 523 6954 - E-mail: Info@Mepsun.com - Web: www.Mepsun.com

BSPP Female Adaptor

90/10 Copper Nickel.

Also available as a [Capillary](#) fitting and/or with [BSPT](#) thread.



*Length and Hex Size may vary.

Nominal Size (Inch) (Inch)		Actual Size (mm x BSPP Thread)	ØB (mm)	W (mm)	ØT BSPP (Thread)	L (mm)	$E. A/F Hex$ (mm)	Weight (Kg)
1/2	x 1/2	20mm x 1/2"	20	2	1/2"	37	27	0.1
3/4	x 3/4	25mm x 3/4"	25	2	3/4"	34	32	0.15
1	x 1	30mm x 1"	30	2.5	1"	39	41	0.25
1.1/4	x 1.1/4	38mm x 1.1/4"	38	2.5	1.1/4"	50	55	0.35
1.1/2	x 1.1/2	44.5mm x 1.1/2"	44.5	2.5	1.1/2"	47	55	0.4
2	x 2	57mm x 2"	57	2.5	2"	51	70	0.5



Marine Engineering Pipeworks Ltd.

Leechmere Industrial Estate, Grangetown, Sunderland, SR2 9TE, United Kingdom
 Tel: +44 191 521 1941 - Fax: +44 191 523 6954 - E-mail: Info@Mepsun.com - Web: www.Mepsun.com

Products And Services

As well as the Marine range of copper nickel 90/10 included in this brochure , we also stock the following:

- EEMUA standard 90/10 Copper Nickel pipe, fittings, and Flanges
- Copper nickel 90/10 sheet and plate. (EEMUA/DIN dual certified)
- Copper nickel 90/10 bar (BS2874, EN12163, ASTM B151, EEMUA)
- Copper nickel 90/10 condenser and heat exchanger tubes
- Copper nickel 90/10 pressfit tube and fittings
- Copper nickel 90/10 nominal bore pipe and fittings
- Aluminium brass ("Yorkalbro") tube, fittings and flanges.
- Aluminium brass condenser and heat exchanger tubes.
- Aluminium brass sheet.
- Aluminium brass round bar.
- Aluminium bronze twin ferrule compression fittings.
- Brass single ferrule compression fittings.
- Brass round and hex bar
- MHD and GHD fittings.
- Gunmetal flanges and fittings.
- Hermetic bulkhead fittings.
- Norma connect couplings
- JIS steel flanges and bronze valves.
- Heating coil tube, fittings and repair couplings 11TU, 11SU.
- Viking Johnson couplings.
- Stainless and carbon steel pipe, fittings, and flanges.
- Pressfit pipe and fittings, in Stainless Steel, Carbon Steel, Copper, and 90/10 Copper Nickel.



Marine Engineering Pipeworks Ltd.

Leechmere Industrial Estate, Grangetown, Sunderland, SR2 9TE, United Kingdom
Tel: +44 191 521 1941 - Fax: +44 191 523 6954 - E-mail: Info@Mepsun.com - Web: www.Mepsun.com

Products And Services

Fabrication

We are able to manufacture in-house from your drawings, sketches or to jig from a sample, bespoke pipework in non-ferrous and ferrous materials using our fully coded welders and experienced design team.

Our welders are coded to Offshore and Marine standards for the production of copper nickel and stainless steel pipework to 100% x-ray standard. We can provide all necessary certification and testing in association with this type of high quality work and we are certified to ISO 9001 2015 to Lloyds' Register Quality Assurance.

All fabrication enquiries are welcome and if we cannot manufacture ourselves we will point you in the right direction.

Machining

We have an in-house machine shop able to produce special components from stock bar, plate or pipe from drawings or samples.

We manufacture for example threaded, capillary, socket weld and butt weld fittings and flanges in all materials, as well as valve components and transducer housings.

We are happy to produce both small one off lathe machined items and mass produced CNC machined items to match your requirements.

Site Installation

We have an experienced team of pipe fabrication and installation technicians, which includes coded welders, pipefitters, platers, mechanical fitters and supervision to suit.

The team is particularly established within the Marine Industry and has completed many large retrofits and new system installations over the last forty years.

For more details please contact our sales department.



Marine Engineering Pipeworks Ltd.

Leechmere Industrial Estate, Grangetown, Sunderland, SR2 9TE, United Kingdom
Tel: +44 191 521 1941 - Fax: +44 191 523 6954 - E-mail: Info@Mepsun.com - Web: www.Mepsun.com



Marine Engineering Pipeworks Ltd.

**Leechmere Industrial Estate
Toll Bar Road
Grangetown
Sunderland
Tyne & Wear
SR2 9TE**

**Tel.: +44 (0) 191 521 1941
Fax: +44 (0) 191 523 6954
E-mail: Info@mepsun.com
Website: www.mepsun.com**